



CCO

**the PBS archive add on
for CO line items**

Manual Part C

**- Display Transactions -
and
- Application Programs -**

Compatible with

- SAP R/3 4.x
- SAP ERP 5.0
- SAP ERP 6.0

SAP[®] Certified
Powered by SAP NetWeaver[®]

January 4, 2010

© 1999 - 2010 PBS Software GmbH

Schwanheimer Strasse 144a

64625 Bensheim, Germany

Phone: +49 - 6251 - 174 0

Fax: +49 - 6251 - 174 174

Email: info@pbs-software.com

Internet: www.pbs-software.com



PBS archive add ons[®] is a registered trademark of PBS Software GmbH, Bensheim.

SAP, R/3, SAP ERP, SAP NetWeaver, ABAP and others are registered trademarks of SAP AG, Walldorf/Baden.

Acrobat Reader is a registered trademark of Adobe Systems Incorporated.

Introduction to the PBS ILM Concept

Information Lifecycle Management

Information Lifecycle Management (ILM) means the administration of information related to the time when it is used, taking into account its total costs and compliance. A conclusive, efficient ILM concept must, as a result, control data growth, manage retention rules, and also ensure compliant data storage. Furthermore, an easy access to archived data is decisive and, for example, its transfer during internal and external audits.

PBS ILM Concept

PBS software provides existing SAP customers extensive solutions to put into practice the requirements that were described above for a stringent and successful ILM concept. PBS is considered as an expert for complex, integrated data accesses to archived and database data and meanwhile, also to data that is located on decommissioned SAP systems. In addition to classical SAP data archiving, SAP BI-specific nearline storage is also supported.

PBS archive add ons®

PBS archive add ons always rely on SAP archiving having been carried out successfully. This is the basis for a permanently high-performing SAP system. In principle, you can indeed retain posted documents in the SAP database for a very long time due to a large database capacity. Depending on the document volume, this may result, however, in massive performance losses and, sooner or later, heavily increasing operation costs. The daily backup becomes difficult for large data stocks, for example.

A convenient display and evaluation of archived transaction data – as the SAP user is used to for database data – can often only be carried out in a very restricted manner using SAP standard means depending on the application module. This is particularly the case for large archive data stocks. The PBS archive add ons can be used here. They can be provided for nearly all SAP modules and release levels, and start with a "C" (for Complete) in their description. For example, PBS archive add on CCOPA for the SAP module COPA.

Using the PBS archive add ons you can quickly and easily access your archived data even after data archiving during your day-to-day business. The unrestricted data access is realized by an intelligent indexing concept. It extends the SAP archive infrastructure components and integrates itself optimally with SAP archiving. Archive data that has been indexed can still be provided after a release upgrade immediately, without restrictions, and without migration effort. The PBS archive index is stored in sequential files of the SAP file system in the same way as the SAP archive data. Afterwards, you can access the archive data online via the familiar transactions. The SAP user can display the data from the SAP database and the

archive data simultaneously via the PBS archive add on index. For the user, it seems as though the archived data is still in the SAP database.

The deep integration of the PBS transactions also enables direct navigation to subsequent and previous documents both within the indexed SAP module as well as to linked documents from other SAP modules. This applies not only for resident but also without restrictions for archived data. The benefit for the user increases the more PBS archive add ons are used.

The potential benefits of the ILM concept raises substantially if you take into account the savings that result from the SAP mirror systems. There are usually at least two of them meaning that the saved disk storage can be tripled by performing data archiving. Thus, time is saved for the data backup.

Table of Contents

1	Introduction	6
2	Application Functions	7
2.1	Overview	7
2.2	PBS Line Item Reports	9
2.3	Report/Report Interface	11
2.4	Report Trees (SAP releases up to 4.5)	14
2.5	Navigation in the PBS archive add on CCO	15
2.5.1	Navigation in the PBS archive add on CCO up to 4.5x	15
2.5.2	Navigation in the PBS archive add on CCO from 4.6	16
3	Conversion of R/2 Data from CCO/CCA Archives	17

1 Introduction

The **PBS archive add ons** are constructed in modular form and cover the application modules FI, SD, MM, CO etc. with a special program package for exactly this application. You can easily see from the name which *PBS archive add on* belongs to which SAP module: CFI, CSD, CMM, CCO etc. All *PBS archive add ons* have in common that they can be easily installed in the SAP R/3 system via the SAP transport utilities "tp" and "SAINT". For installation details of the *PBS archive add ons* please see the specific installation manual (manual part A).

This manual on the display transaction and application programs was written to support you when using the *PBS archive add on CCO*. Please see the administration manual (part B) regarding construction and administration of the *PBS archive add on CCO*.

The modular user manual of each *PBS archive add on* is composed of partial manuals:

- Part A: Installation
- Part B: Administration, Archive Construction and Maintenance
- Part C: Application Programs / Transactions
- Part D: Migration Support R/2 => R/3 (if available)

There are additional manuals for the PBS utilities: Conversion Tool, Archive Browser, Translation Tool.

Should you have questions regarding the installation of the *PBS archive add ons* or if you have problems when installing the software please call directly the **Service Hotline of PBS Software GmbH**:

Phone: +49 - 6251 - 174 110
Fax: +49 - 6251 - 174 174
Email: hotline@pbs-software.com

2 Application Functions

2.1 Overview

In the PBS archive add on CCO, the display transactions shown below are available. The PBS transactions can display and evaluate CO line items from operative tables of the SAP database as well as archived documents via the PBS archive add on CCO. For your convenience, we listed the PBS transaction codes together with the corresponding SAP transactions:

PBS 4.0, 4.5	from PBS 4.6	SAP	Transaction Description
/PBS/KB13	/PBS/KB13N	KB13, KB13N	Display reposting of primary costs
/PBS/KB43	/PBS/KB43N	KB43, KB43N	Display reposting of revenues
/PBS/KB63	/PBS/KB63	KB63	Display reposting of CO line items
	/PBS/KB66	KB66	Display indir. acty. allocation reposting
	/PBS/KB16N	KB16N	Display manual allocations
/PBS/KB23	/PBS/KB23N	KB23, KB23N	Display direct activity allocation
/PBS/KB53	/PBS/KB53N	KB53, KB53N	Display activity posting
/PBS/KB33	/PBS/KB33N	KB33, KB33N	Display statistical key figures
/PBS/KALR	/PBS/KALR	KALR	Reconciliation ledger: CO line items
/PBS/KSB1	/PBS/KSB1	KSB1	Cost centers: Actual line items
/PBS/KSBP	/PBS/KSBP	KSBP	Cost centers: Plan line items
/PBS/KOB1	/PBS/KOB1	KOB1	Orders: Actual line items
/PBS/KOBP	/PBS/KOBP	KOBP	Orders: Plan line items
/PBS/CJI3	/PBS/CJI3	CJI3	Projects: Actual cost line items
/PBS/CJI4	/PBS/CJI4	CJI4	Projects: Plan line items
/PBS/CPB1	/PBS/CPB1	CPB1	Business processes: Actual line items
/PBS/CPBP	/PBS/CPBP	CPBP	Business processes: Plan line items
/PBS/KKCS	/PBS/KKCS	KKCS	Cost object: Actual line items
/PBS/KKCP	/PBS/KKCP	KKCP	Cost object: Plan line items
/PBS/KVBI	/PBS/KVBI	KVBI	Sales documents: line items actual
/PBS/KSB5	/PBS/KSB5	KSB5	Controlling documents: Actual costs
/PBS/KABP	/PBS/KABP	KABP	Controlling documents: Plan costs

Table 2.1: Display transactions of the PBS archive add on CCO from SAP releases

PBS Software GmbH has an own namespace from release 4.0. The transactions described in this manual have names from this namespace exclusively. Customers using SAP release 3.1 can find the display transactions of the PBS archive add on CCO for release 3.1 in table 2.2.

PBS 3.1	SAP	Transaction description
YB13	KB13	Display of reposting of primary costs
YB23	KB23	Display allocation of activities
YB33	KB33	Display statistical key figures
YB43	KB43	Display reposting of revenues
YB53	KB53	Display entry of activities
YB63	KB63	Display reposting of CO line items
YALR	KALR	Reconciliation ledger: CO line items
YSB1	KSB1	Cost centers: Actual line items
YOB1	KOB1	Order: Actual line items
YJ74	CJ74	Projects: Actual line items
YPB1	CPB1	Business processes line item actual
YKCS	KKCS	Cost object line item actual
YSB5	KSB5	Controlling documents actual costs

Table 2.2: Display transactions of the PBS archive add on CCO for SAP release 3.1

2.2 PBS Line Item Reports

As you can see from the table in section 2.1, numerous line item reports are provided for the PBS archive add on CCO:

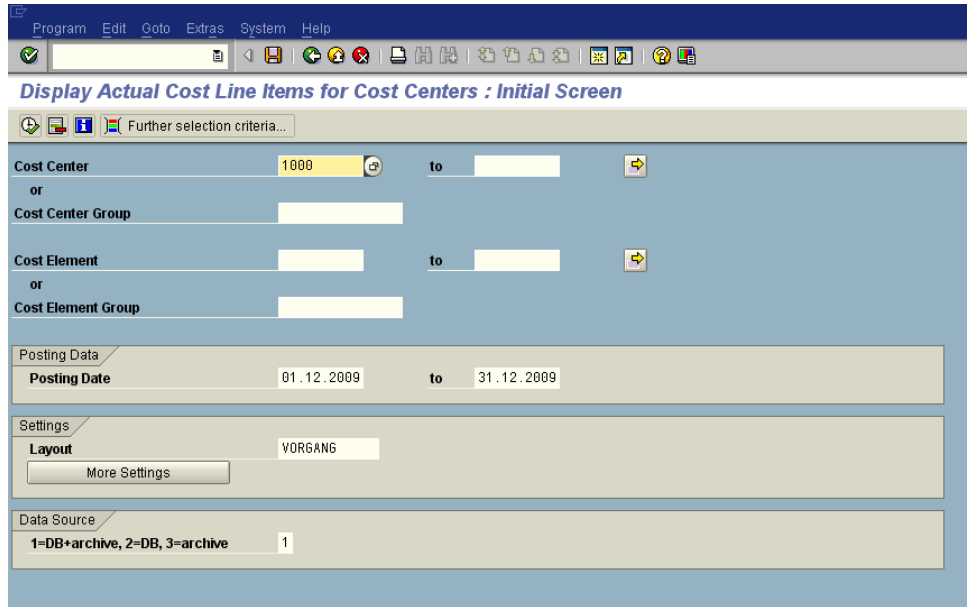


Diagram 2.1: Selection screen of transaction /PBS/KSB1

Compared to the original SAP transactions the PBS display transactions can read and display CO line items from **both** data sources, the PBS archive and the SAP database **simultaneously**. You do not have to enter the archiving object or select the SAP archive file. This selection is automatically carried out via the archive index of the PBS archive add on CCO.

Otherwise, the functionality of the PBS display transactions and reports is completely identical to the corresponding SAP transactions. For more detailed information on the functionality of the corresponding display transaction, please refer to the SAP documentation.

In the display list the PBS archive indicator * is shown in a separate column. This archive column is automatically created in all display variants.

List Edit Goto Settings Extras Environment System Help

Display Actual Cost Line Items for Cost Centers

Document Master Record

Layout 1SAP Primary cost posting
 Cost Center 1000 Corporate Services
 Report currency EUR Euro

A	Cost Element	Cost element name	Σ Val.in rep.cur.	Total quantity	PUM	O	Offst.acct	Name of offsetting account
*	220050	Int.exp. rental dep.	1.000,00-					
*	400000	Raw Materials 1	51,13			S	399999	Inventory taking
*		Raw Materials 1	1.022,58			S	399999	Inventory taking
*		Raw Materials 1	1.022,58			K	1100	Phunix GmbH
*		Raw Materials 1	2.096,30					
*		Raw Materials 1	4.192,59-					
*			61,36	80	KG	M	300000	Inventory - Raw Mate
*			40,90	80	KG	M	300000	Inventory - Raw Mate
*		Raw Materials 1	25,56	100	KG	M	300000	Inventory - Raw Mate
*		Raw Materials 1	76,69	120	KG	M	300000	Inventory - Raw Mate
*		Raw Materials 1	19,17	75	KG	M	300000	Inventory - Raw Mate
*		Raw Materials 1	23,52	80	KG	M	300000	Inventory - Raw Mate
*		Raw Materials 1	61,36	150	KG	M	300000	Inventory - Raw Mate
*		Raw Materials 1	38,35	100	KG	M	300000	Inventory - Raw Mate
*		Raw Materials 1	27,61	180	KG	M	300000	Inventory - Raw Mate
*		Raw Materials 1	12,78	100	KG	M	300000	Inventory - Raw Mate
*		Raw Materials 1	15,34	150	KG	M	300000	Inventory - Raw Mate

PBS Indicator

Diagram 2.2: Display list of transaction /PBS/KSB1

2.3 Report/Report Interface

The report/report interface allows you to call the PBS line item reports also from other R/3 application components.

This is especially useful for the different totals reports that can be used to carry out diverse period comparisons. The PBS line item reports can be called from these reports as well. This allows you to display all line items belonging to a totals record from an extract, the database, or the PBS archive. In contrast to the original SAP line item reports, you can access the line items from the database and the PBS archive simultaneously using the PBS transactions.

The CCO line item reports can be entered manually via SAP transaction GR52 into the report/report interface. From SAP Release 4.0, this can be done more easily using the PBS utility /PBS/CCOI_BBS and from ECC 6.0 using the PBS utility /PBS/CCO_TRSTI.

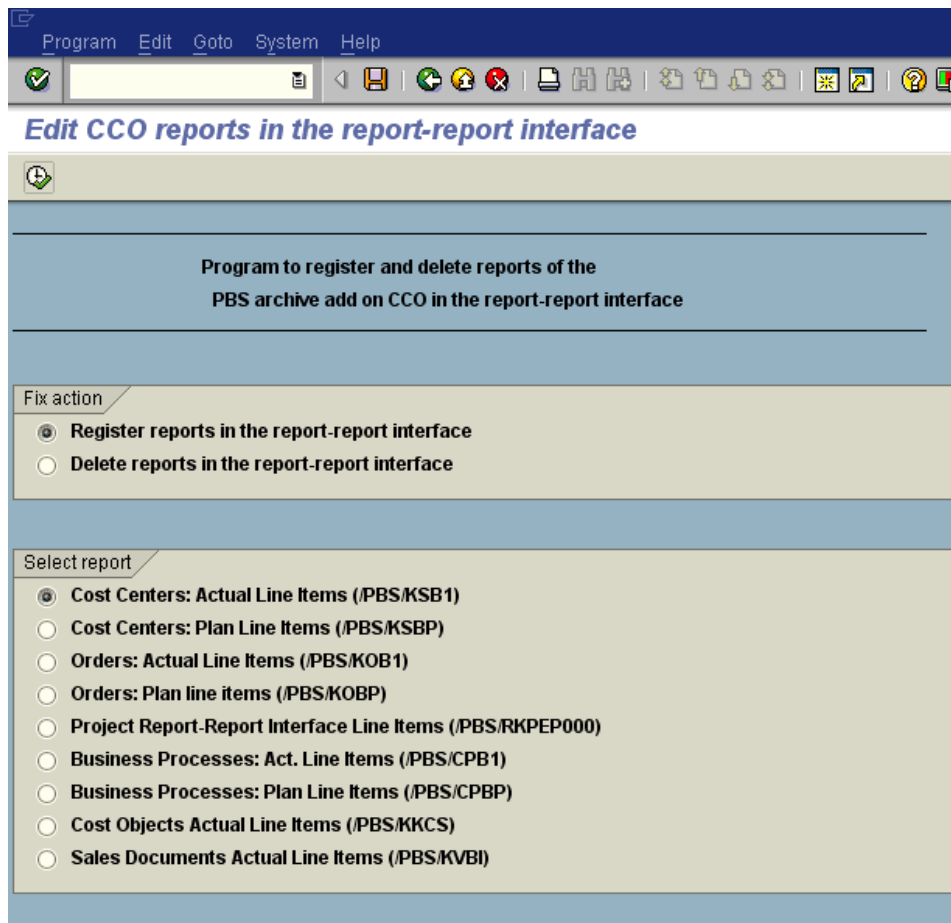


Diagram 2.3: Maintain report/report interface (/PBS/CCOI_BBS)

In the selection screen of the utility /PBS/CCOI_BBS, you have to select the action 'Enter reports into the report/report interface' and select the desired CCO line item report. If you start the utility via 'Execute (F8)' a list is displayed containing all sender reports (report groups) to which the SAP line item report is already assigned. Select the desired sender reports in the list and then confirm the selection again by choosing 'Execute (F8)'. The desired CCO line item report is now entered into the report/report interface as a receiver report.

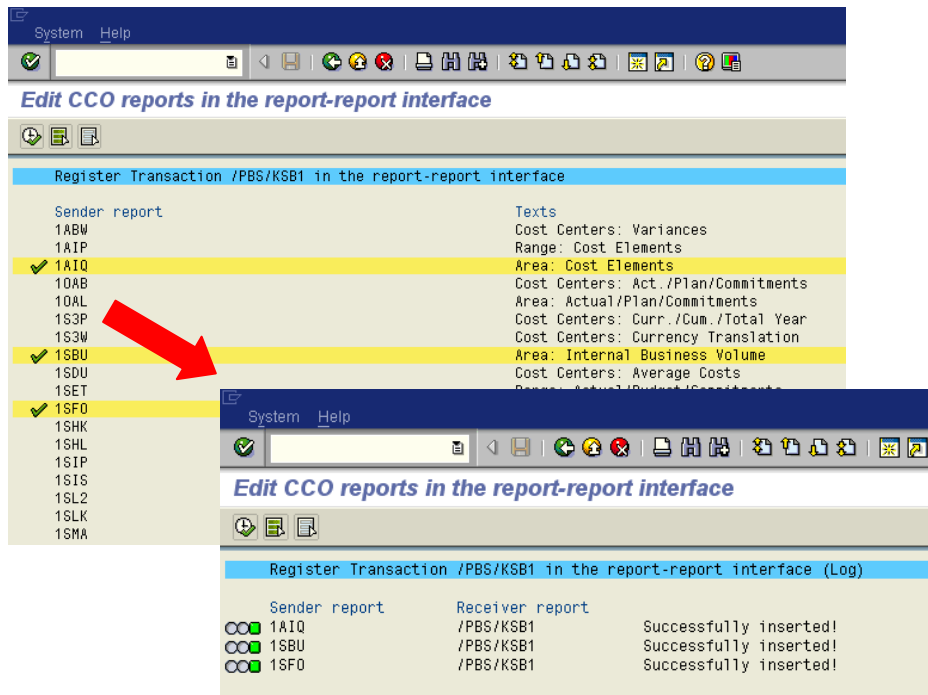


Diagram 2.4: Transaction /PBS/KSB1 entered into the report/report interface (/PBS/CCOI_BBS)

2.4 Report Trees (SAP releases up to 4.5)

If you want to link PBS transactions to your own reports, we recommend that you proceed in the following way:

If the transaction name (e.g. KSB1) is defined directly in the report tree, you can also add the corresponding PBS transaction (in this example /PBS/KSB1) to this report tree. You reach the settings for the report trees directly via transaction **OKLS**. Enter the name of the tree (e.g. RKS1) and press **F6** ("Change report tree") to reach the maintenance screen for the report tree in question. You can expand the tree by clicking on the nodes:

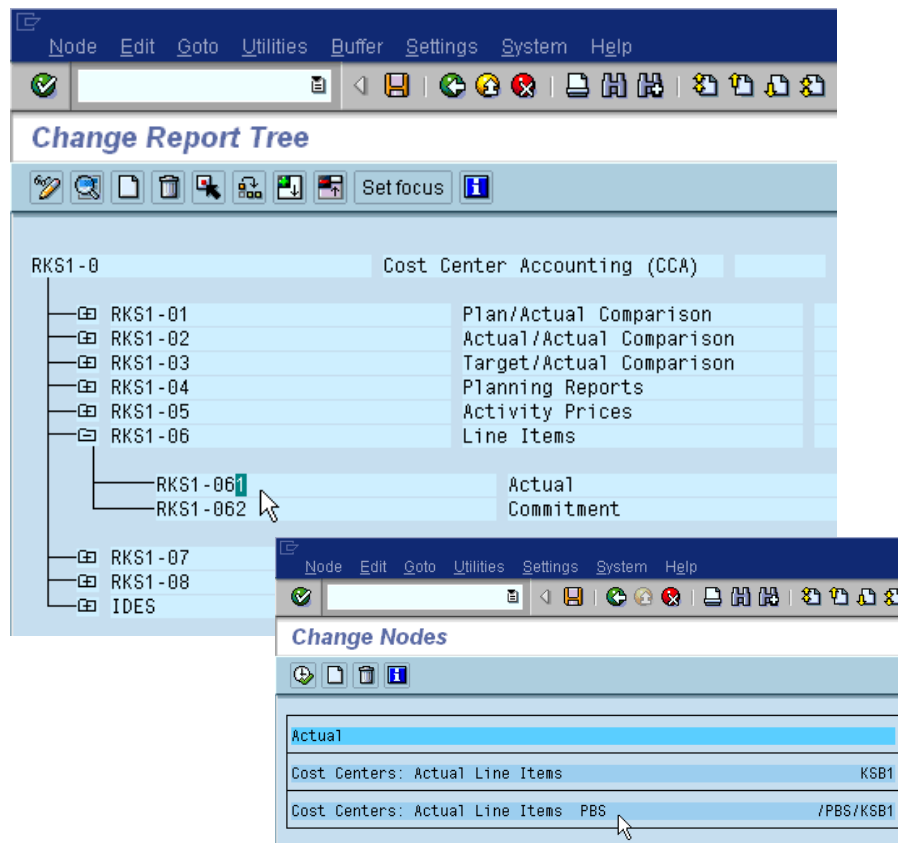


Diagram 2.6: Enhancement of report tree RKS1

At a relevant position (e.g. **RKS1-061** – Line item actual), you can press F2 or double-click to open a screen where you can enter the transaction name of the PBS transaction (here **/PBS/KSB1**) by choosing **Edit** ⇒ **Create** ⇒ **Other report type** ⇒ **'TR'** in the menu. Please save your changes.

2.5 Navigation in the PBS archive add on CCO

2.5.1 Navigation in the PBS archive add on CCO up to 4.5x

The PBS delivery has an integrated start menu like the SAP standard menu S000 that appears following logon to the SAP system. The only difference is the additional function key "PBS archive add ons".

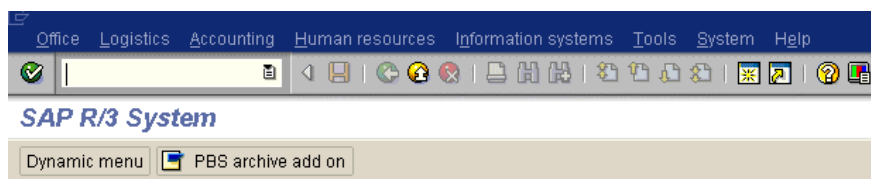


Diagram 2.7: PBS start menu after logon to the SAP system

To use this menu, you have to enter "YPBS" for users up to 3.1, "/PBS/PBS" for users in all 4.0 releases, and /PBS/PBS_45 from Release 4.5 as the start menu in the user master record.

Once you click on the button, you reach the main menu transaction for the PBS archive add ons, which allows you to branch easily to the individual modules.

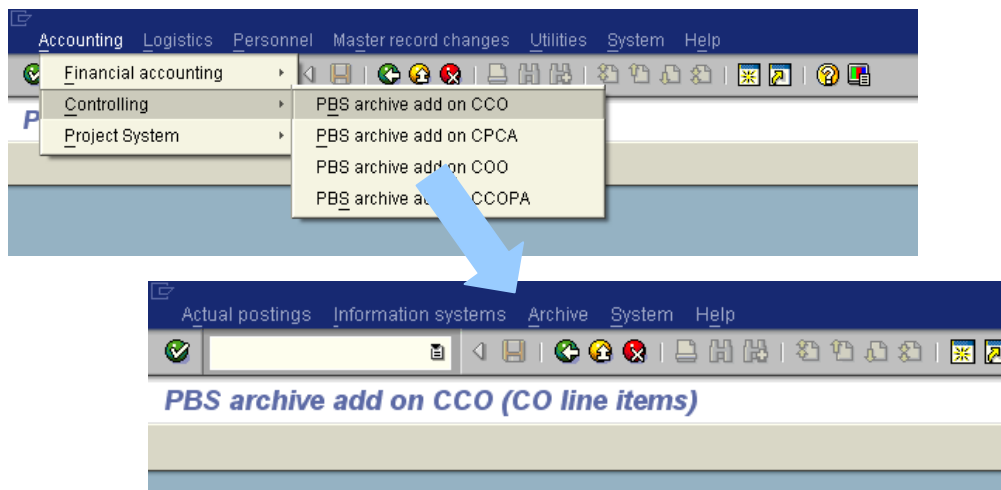


Diagram 2.8: PBS main menu with branching to the PBS archive add on CCO

3 Conversion of R/2 Data from CCO/CCA Archives

If archived CO line items have been migrated from SAP R/2 (release 4.3 or 5.0) into SAP R/3 (release 3.0 or 3.1) with the **PBS archive add on CCO/CCA** before the implementation of PBS archive add on CCO (from 4.0B), you can migrate this data with the help of program /PBS/CCOIUMSL. Then you can continue to use and display this data with PBS archive add on CCO. In the PBS archive add on CCO/CCA for R/3 release 3.x, the data was stored in a PBS-specific format which does not correspond to the ADK standard.

All archive data archived in SAP R/3 can directly be processed for the construction of a PBS archive (/PBS/CCOILOAD) in PBS archive add on CCO. But, R/2 archive data, which was migrated into a former CCO/CCA archive in SAP release 3.x must be converted into a format which can be read by load program /PBS/CCOILOAD. Program /PBS/CCOIUMSL creates SAP archive files corresponding to the data format of archiving object CO_ITEM from the migrated R/2 data of SAP release 3.0/3.1. Then, these archive files can be processed with program /PBS/CCOILOAD. Please call conversion program /PBS/CCOIUMSL via the main menu of CCO: **PBS archive** ⇒ **PBS utilities CCOI** ⇒ **Conversion program R/2 data CCO/CCA => CO_ITEM**

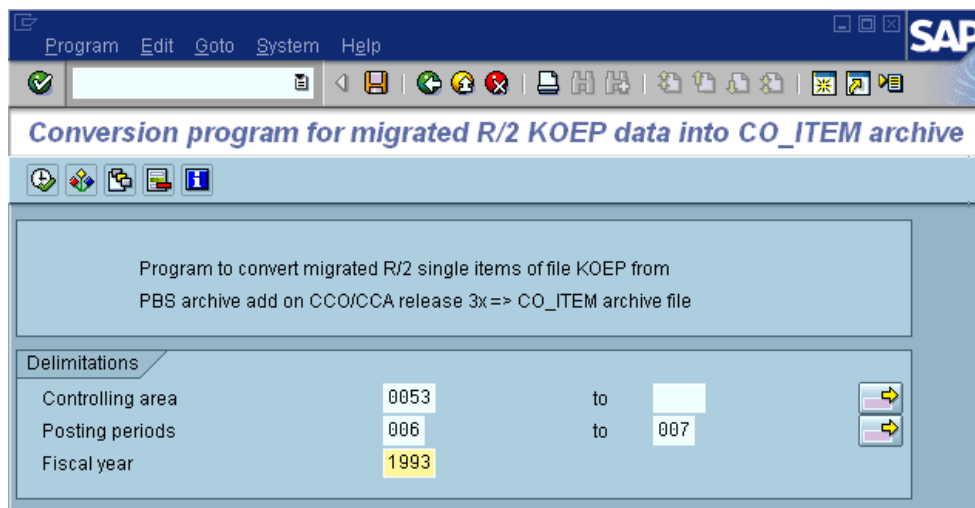


Diagram 3.1: Selection screen of conversion program for migrated KOEP data

According to the delimitations (see Diagram 3.1), the conversion program accesses an **existing PBS archive created under release 3.0/3.1 with the PBS archive add on CCO/CCA**.

PBS recommends to convert the data step by step into the corresponding archive files of archiving object CO_ITEM depending on the size of the old CCO/CCA archive (monthly, quarterly or yearly).

The following preconditions must be fulfilled for the implementation of conversion program /PBS/CCOUMSL:

- The file path to the existing PBS archive CCO/CCA under 3.x has to be accessible from the current system (file path: see CCO/CCA manual!).
- Online access to the archived data of CCO/CCA was made possible by running program /PBS/CCOCFILE (in analogy to ZZCKFILE of PBS archive add on CCO/CCA, see CCO/CCA user manual). Program /PBS/CCOCFILE is called via the CCO main menu: **PBS archive** ⇒ **PBS utilities CCOI** ⇒ **Load admin. table for R/2 data conversion (/PBS/CCOCFILE)**

Having completed the conversion run, program /PBS/CCOUMSL displays a log of the archived CO line items:

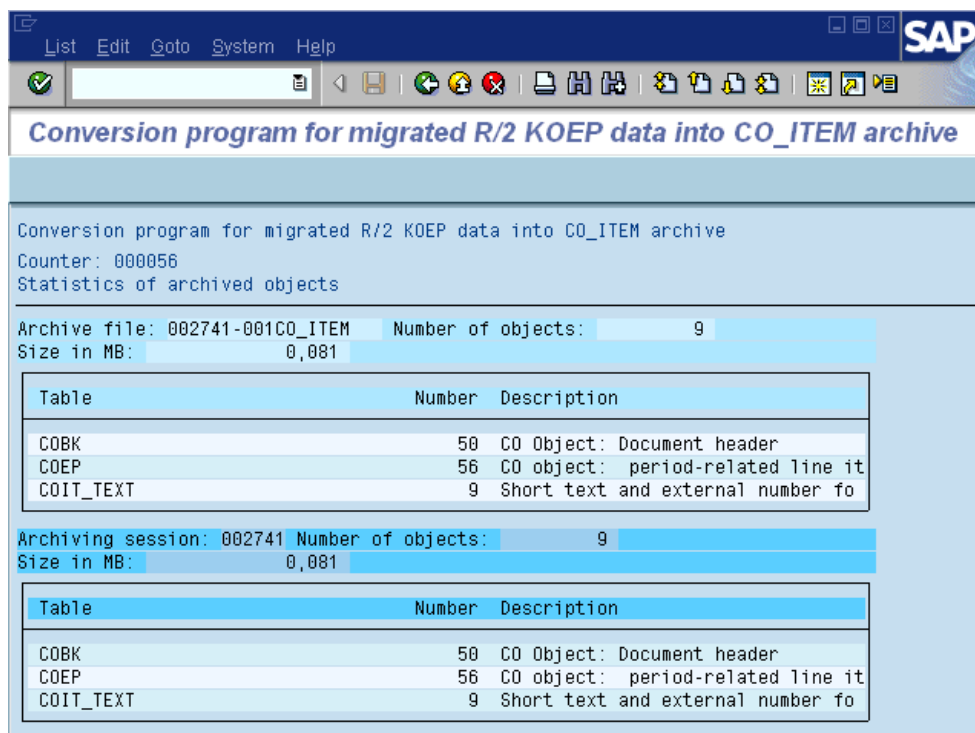


Diagram 3.2: Log of the conversion program for migrated KOEP data

After the successful conversion of the old data, the PBS archive add on CCO/CCA for release 3.x which is no longer needed can now be deleted.