



CCU

the PBS archive add on for master data changes

Manual Part C

- Display and Evaluation -

Compatible with SAP R/3

- ECC 5.0
- ECC 6.0

SAP[®] Certified
Powered by SAP NetWeaver[®]

January 01, 2009

© 1999 - 2009 PBS Software GmbH

Schwanheimer Strasse 144a

D-64625 Bensheim, Germany

Phone: +49 - 6251 - 174 0

Fax: +49 - 6251 - 174 174

email: info@pbs-software.com

Internet: www.pbs-software.com



PBS archive add ons is a registered trademark of PBS Software GmbH, Bensheim.

SAP, R/3, mySAP ERP, SAP NetWeaver, ABAP are registered trademarks of SAP AG, Walldorf/Baden.

Acrobat Reader is a registered trademark of Adobe Systems Incorporated.

Introduction to the PBS ILM Concept

Information Lifecycle Management

Information Lifecycle Management (ILM) means the administration of information related to the time when it is used, taking into account its total costs and compliance. A conclusive, efficient ILM concept must, as a result, control data growth, manage retention rules, and also ensure compliant data storage. Furthermore, an easy access to archived data is decisive and, for example, its transfer during internal and external audits.

PBS ILM Concept

PBS software provides existing SAP customers extensive solutions to put into practice the requirements that were described above for a stringent and successful ILM concept. PBS is considered as an expert for complex, integrated data accesses to archived and database data and meanwhile, also to data that is located on decommissioned SAP systems. In addition to classical SAP data archiving, SAP BI-specific nearline storage is also supported.

PBS archive add ons[®]

PBS archive add ons always rely on SAP archiving having been carried out successfully. This is the basis for a permanently high-performing SAP system. In principle, you can indeed retain posted documents in the SAP database for a very long time due to a large database capacity. Depending on the document volume, this may result, however, in massive performance losses and, sooner or later, heavily increasing operation costs. The daily backup becomes difficult for large data stocks, for example.

A convenient display and evaluation of archived transaction data – as the SAP user is used to for database data – can often only be carried out in a very restricted manner using SAP standard means depending on the application module. This is particularly the case for large archive data stocks. The PBS archive add ons can be used here. They can be provided for nearly all SAP modules and release levels, and start with a "C" (for *Complete*) in their description. For example, PBS archive add on CCOPA for the SAP module COPA.

Using the PBS archive add ons you can quickly and easily access your archived data even after data archiving during your day-to-day business. The unrestricted data access is realized by an intelligent indexing concept. It extends the SAP archive infrastructure components and integrates itself optimally with SAP archiving. Archive data that has been indexed can still be provided after a release upgrade immediately, without restrictions, and without migration effort. The PBS archive index is stored in sequential files of the SAP file system in the same way as the SAP archive data. Afterwards, you can access the archive data online via the familiar transactions. The SAP user can display the data from the SAP database and the archive data simultaneously via the PBS archive add on index. For the user, it seems as though the archived data is still in the SAP database.

The deep integration of the PBS transactions also enables direct navigation to subsequent and previous documents both within the indexed SAP module as well as to linked documents from other SAP modules. This applies not only for resident but also without restrictions for archived data. The benefit for the user increases the more PBS archive add ons are used.

The potential benefits of the ILM concept raises substantially if you take into account the savings that result from the SAP mirror systems. There are usually at least two of them meaning that the saved disk storage can be tripled by performing data archiving. Thus, time is saved for the data backup.

Table of Contents

1	Introduction	6
2	Display Transactions	7
2.1	Overview	7
2.2	Transactions of the PBS archive add on CCU	10
2.3	Adjustment of Customer-Specific Reports	13

1 Introduction

The **PBS archive add ons** are constructed in modular form and cover the application modules FI, SD, MM, CO etc. with a special program package for exactly this application. You can easily see from the name which *PBS archive add on* belongs to which SAP module: CFI, CSD, CMM, CCO etc. All *PBS archive add ons* have in common that they can be easily installed in the SAP R/3 system via the SAP transport utilities "tp" and "SAINT". For installation details of the *PBS archive add ons* please see the specific installation manual (manual part A).

This manual on the display transaction and application programs was written to support you when using the *PBS archive add on CCU*. Please see the administration manual (part B) regarding construction and administration of the *PBS archive add on CCU*.

The modular user manual of each *PBS archive add on* is composed of partial manuals:

- Part A: Installation
- Part B: Administration, Archive Construction and Maintenance
- Part C: Application Programs / Transactions

There are additional manuals for the PBS utilities: Conversion Tool, Archive Browser, Translation Tool.

Should you have questions regarding the installation of the *PBS archive add ons* or if you have problems when installing the software please call directly the **Service Hotline of PBS Software GmbH**:

Phone: +49 - 6251 - 174 110
Fax: +49 - 6251 - 174 174
email: hotline@pbs-software.com

Release Compatibility

The **PBS archive add on CCU** discussed in this manual runs with the basis programs of SAP AG, D-69190 Walldorf/Baden, system R/3, **ERP CC 5.0, correction levels a to z**.

2 Display Transactions

2.1 Overview

The *PBS archive add on CCU* provides the user in the online operation with those change documents which have already been removed with transaction SARA from the R/3 database. In the same way, the migrated R/2 documents which have been transferred into the PBS archive add on can be displayed (see manual B). In version 2.0 the following transactions which do not only read the documents from the operative tables of the SAP system but also from the PBS archive are available.

PBS	SAP	Transaction Description
/PBS/XD04	XD04	Display account changes (central) from 4.6C
/PBS/FD04	FD04	Display customer changes
/PBS/XK04	XK04	Display account changes (central) from 4.6C
/PBS/MK04	MK04	Display vendor changes
/PBS/FS04	FS04	Display G/L account changes
/PBS/FSM4	FSM4	Display sample changes from 4.7
/PBS/FSP4	FSP4	Display chart of accounts changes from 4.7
/PBS/FSS4	FSS4	Display company code changes from 4.7
/PBS/MM04	MM04	Display material changes
/PBS/KS05	KS05	Display cost center changes (central)
/PBS/AS04	AS04	Display asset changes
/PBS/ZU90		Display general changes
/PBS/CCU		Area menu CCU

Table 1: Transactions of the *PBS archive add on CCU* and the corresponding SAP original transaction.

Integration

All transactions displaying the archived data are analogue to the SAP standard transactions. This guarantees that the users can work without any training immediately with the archive transactions. Please see Table 1 for the names of the archive transactions. The transactions can be called by indicating the PBS transaction codes or via area menu /PBS/CCU.

The main menu /PBS/PBS and the menu /PBS/CCU into roles from where you can start the transactions (see Diagram 2).

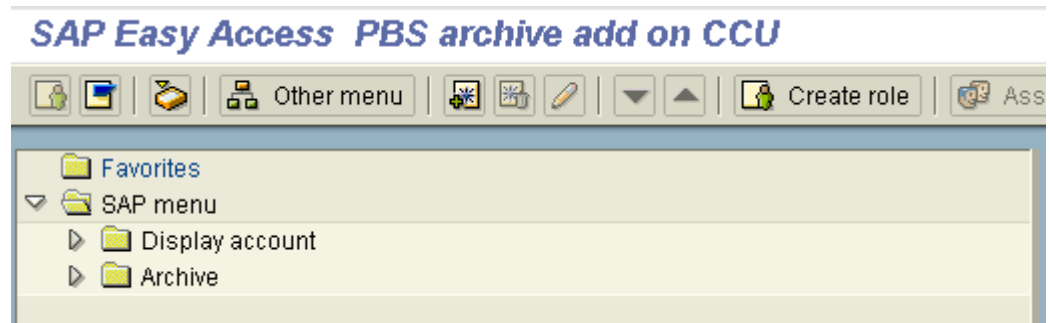


Diagram 1: Area menu /PBS/CCU

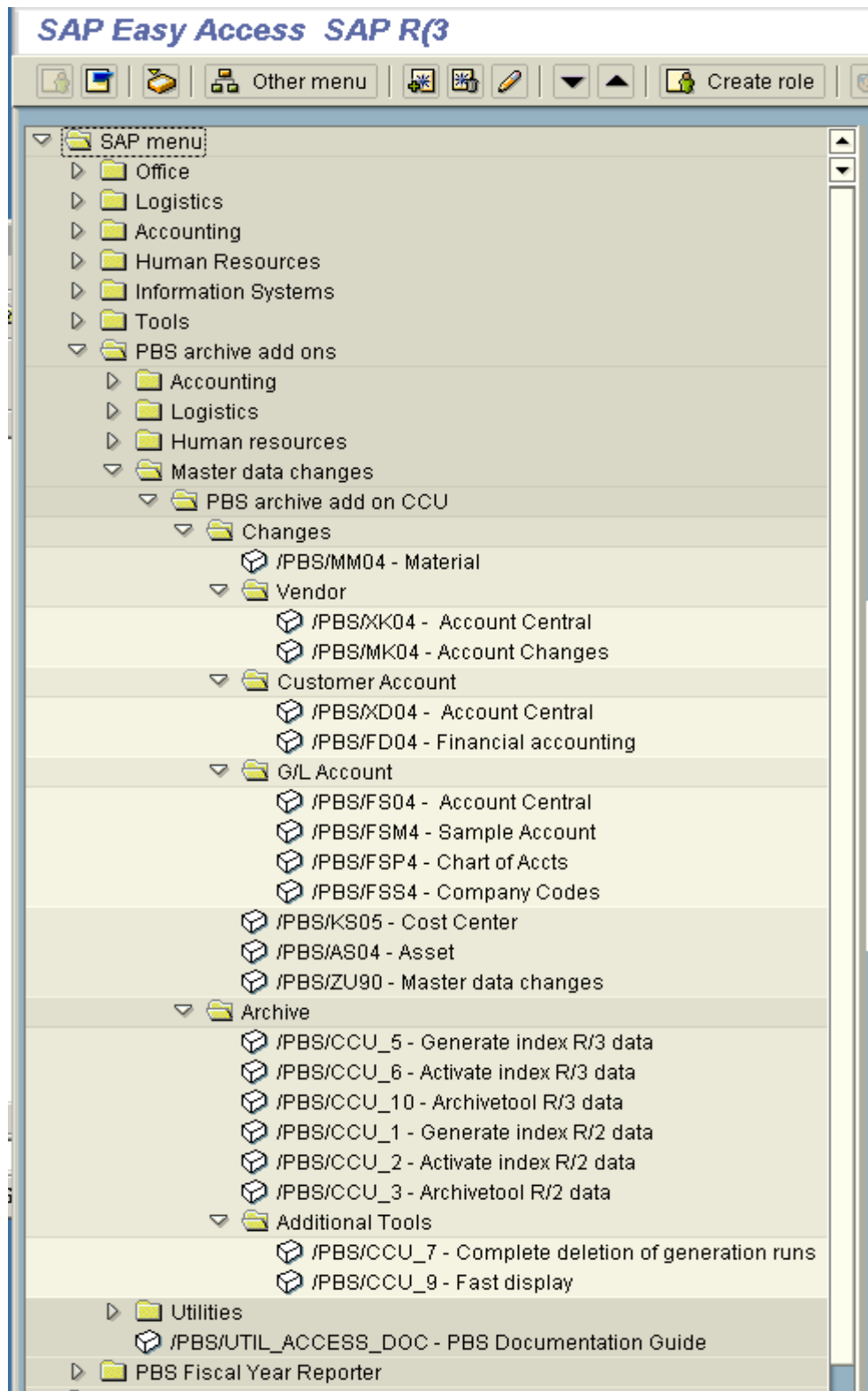


Diagram 2: Area menu /PBS/CCU

2.2 Transactions of the PBS archive add on CCU

In this section we discuss archive transaction /PBS/ZU90 which you can use to display all change documents.

ZU90

Diagram 3 shows the request screen of transaction /PBS/ZU90.

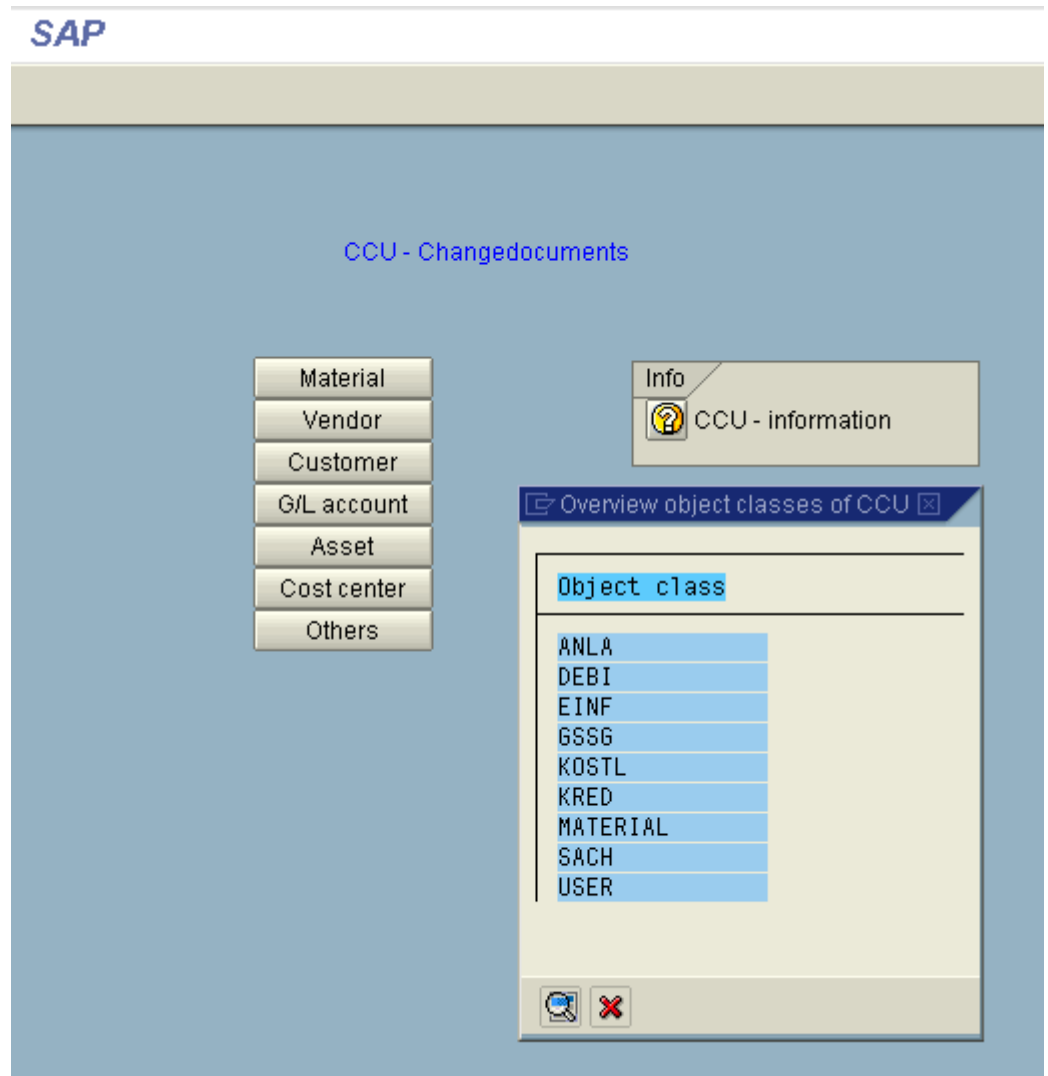


Diagram 3: Entry screen of transaction /PBS/ZU90 after pressing the button 'Others'.

Master Data Cat. Via push buttons you can select directly certain master data categories like material. Push button 'Others' allows the selection of all master data categories in the archive. As displayed in Diagram 3, they are displayed in a separate POPUP and can be selected via double click.

List If all delimitations have been entered correctly the system provides a list displaying the requested change documents regarding the selected master data. Diagram 4 shows such a list.

Date	Time	Changed by	Vendor	TCode
21.04.1997	08:54:53	HALTRICH	0000004657	FK02
21.04.1997	08:55:13	HALTRICH	0000004657	FK02
13.08.1996	19:08:49	HALTRICH	0000180245	FK05
13.08.1996	19:08:50	HALTRICH	0000180256	FK05
13.08.1996	19:08:50	HALTRICH	0000180283	FK05
13.08.1996	19:08:51	HALTRICH	0000180417	FK05
13.08.1996	19:08:49	HALTRICH	0000180225	FK05
13.08.1996	19:08:43	HALTRICH	0000008078	FK05
13.08.1996	19:08:43	HALTRICH	0000008295	FK05
13.08.1996	19:08:44	HALTRICH	0000009192	FK05
13.08.1996	19:08:45	HALTRICH	0000010218	FK05
13.08.1996	19:08:45	HALTRICH	0000010497	FK05
13.08.1996	19:08:45	HALTRICH	0000012710	FK05
13.08.1996	19:08:56	HALTRICH	0000181110	FK05
13.08.1996	19:08:57	HALTRICH	0000181115	FK05
13.08.1996	19:08:57	HALTRICH	0000181118	FK05
13.08.1996	19:08:58	HALTRICH	0000181159	FK05
13.08.1996	19:08:58	HALTRICH	0000181160	FK05
13.08.1996	19:08:59	HALTRICH	0000181217	FK05
13.08.1996	19:08:55	HALTRICH	0000181068	FK05
13.08.1996	19:08:51	HALTRICH	0000180482	FK05
13.08.1996	19:08:52	HALTRICH	0000180561	FK05
13.08.1996	19:08:52	HALTRICH	0000180695	FK05
13.08.1996	19:08:53	HALTRICH	0000180717	FK05
13.08.1996	19:08:54	HALTRICH	0000180757	FK05
13.08.1996	19:08:55	HALTRICH	0000180821	FK05
13.08.1996	19:08:42	HALTRICH	0000006971	FK05
13.08.1996	19:07:59	HALTRICH	0000001202	FK05
06.05.1991	07:52:22	COLON FLORES	0000010394	R/2
07.05.1991	10:57:43	COLON FLORES	0000012425	R/2
07.05.1991	10:01:57	GOEBEL-C	0000012574	R/2
07.05.1991	12:25:14	BESSLER	0000001717	R/2
07.05.1991	12:30:03	BESSLER	0000001717	R/2
07.05.1991	15:13:49	MOLFENTER	0000000361	R/2
07.05.1991	14:37:12	STEFANIAK	0000000006	R/2
06.05.1991	12:23:32	COLON FLORES	0000003058	R/2
06.05.1991	14:34:06	REIS	0000181102	R/2
03.05.1991	14:59:18	COLON FLORES	0000007022	R/2
03.05.1991	15:02:49	COLON FLORES	0000003117	R/2

Diagram 4: List of transaction /PBS/ZU90.

Document Display By moving the cursor to a document and double click on this document you get to the document detailed display (see Diagram 5).

Display Changes: Change Document

Vendor	0000000096	Date	23.04.1991	Time	12:11:44	ChangeNr	36000066
Changed by	COLON FLORES						
Change	Bankleitzahl					LIFA-BANKL	
Old value:			70190100				
New value:			70190000				
Change	Bankkontonummer					LIFA-BANKN	
Old value:			70530				
New value:			2817632				
Change	Postgirokontonummer					LIFA-PSKTO	
Old value:			40001				
New value:							

Diagram 5: Detailed display of a change document

2.3 Adjustment of Customer-Specific Reports

In general, the change documents are accessed via function modules

CHANGEDOCUMENT_READ_HEADERS

CHANGEDOCUMENT_READ_POSITIONS.

If you want to consider in your evaluation the archived change documents as well, substitute these function modules by the following function modules contained in the *PBS archive add on CCU*:

/PBS/CCU_CD_READ_HEADERS

/PBS/CCU_CD_READ_POSITIONS