



# CDART

the PBS archive add on  
for SAP Data Retention Tool

## Manual Part A: - Installation -

Compatible with  
- SAP R/3 4.x  
- SAP ERP 5.0 and 6.0

**SAP**<sup>®</sup> Certified  
Powered by SAP NetWeaver<sup>®</sup>

April 21, 2009

© 2002 - 2009 PBS Software GmbH

Schwanheimer Strasse 144a

64625 Bensheim, Germany

Phone: +49 - 6251 - 174 0

Fax: +49 - 6251 - 174 174

Email: [info@pbs-software.com](mailto:info@pbs-software.com)

Internet: [www.pbs-software.com](http://www.pbs-software.com)



***PBS archive add ons*** is a registered trademark of PBS Software GmbH, Bensheim.

**SAP, R/3, SAP ERP, SAP NetWeaver, ABAP** are registered trademarks of SAP AG, Walldorf/Baden.

**Acrobat Reader** is a registered trademark of Adobe Systems Incorporated.

## Introduction to the PBS ILM Concept

---

### Information Lifecycle Management

Information Lifecycle Management (ILM) means the administration of information related to the time when it is used, taking into account its total costs and compliance. A conclusive, efficient ILM concept must, as a result, control data growth, manage retention rules, and also ensure compliant data storage. Furthermore, an easy access to archived data is decisive and, for example, its transfer during internal and external audits.

### PBS ILM Concept

PBS software provides existing SAP customers extensive solutions to put into practice the requirements that were described above for a stringent and successful ILM concept. PBS is considered as an expert for complex, integrated data accesses to archived and database data and meanwhile, also to data that is located on decommissioned SAP systems. In addition to classical SAP data archiving, SAP BI-specific nearline storage is also supported.

### PBS archive add ons<sup>®</sup>

PBS archive add ons always rely on SAP archiving having been carried out successfully. This is the basis for a permanently high-performing SAP system. In principle, you can indeed retain posted documents in the SAP database for a very long time due to a large database capacity. Depending on the document volume, this may result, however, in massive performance losses and, sooner or later, heavily increasing operation costs. The daily backup becomes difficult for large data stocks, for example.

A convenient display and evaluation of archived transaction data – as the SAP user is used to for database data – can often only be carried out in a very restricted manner using SAP standard means depending on the application module. This is particularly the case for large archive data stocks. The PBS archive add ons can be used here. They can be provided for nearly all SAP modules and release levels, and start with a "C" (for Complete) in their description. For example, PBS archive add on CCOPA for the SAP module COPA.

Using the PBS archive add ons you can quickly and easily access your archived data even after data archiving during your day-to-day business. The unrestricted data access is realized by an intelligent indexing concept. It extends the SAP archive infrastructure components and integrates itself optimally with SAP archiving. Archive data that has been indexed can still be provided after a release upgrade immediately, without restrictions, and without migration effort. The PBS archive index is stored in sequential files of the SAP file system in the same way as the SAP

archive data. Afterwards, you can access the archive data online via the familiar transactions. The SAP user can display the data from the SAP database and the archive data simultaneously via the PBS archive add on index. For the user, it seems as though the archived data is still in the SAP database.

The deep integration of the PBS transactions also enables direct navigation to subsequent and previous documents both within the indexed SAP module as well as to linked documents from other SAP modules. This applies not only for resident but also without restrictions for archived data. The benefit for the user increases the more PBS archive add ons are used.

The potential benefits of the ILM concept raises substantially if you take into account the savings that result from the SAP mirror systems. There are usually at least two of them meaning that the saved disk storage can be tripled by performing data archiving. Thus, time is saved for the data backup.

# Table of Contents

<b>1. The PBS DART Concept</b>	<b>7</b>
1.1 SAP DART Concept	7
1.2 PBS DART Concept	8
<b>2. Introduction</b>	<b>9</b>
<b>3. The PBS Concept for Software Deliveries</b>	<b>10</b>
3.1 Final Release	10
3.2 Customer Patch	10
<b>3.2.1 Password</b>	<b>11</b>
<b>IMPORTANT:</b>	<b>11</b>
<b>4. Delivery</b>	<b>12</b>
4.1 Components for the SAP System: Final Release	13
4.2 Customer Patch (Updates and Subsequent Transports)	13
4.3 Installation into the SAP System	14
4.4 Country versions for CDART	14
4.5 PBS Namespace from Release 4.0	15
4.6 Initial Installation	16
4.7 Installation of Updates (Customer Patch)	18
4.8 Supervision of the Installed Transport	19
4.8.1 Transport into the Production system	21
4.9 Summary of the Installation	24
4.10 Peculiarities under Operating System AS/400	25
<b>5. Module-Specific Features</b>	<b>26</b>
5.1 Archive Index Financial Accounting	26
5.1.1 Administration Table	26
5.1.2 Euro Functionality	26
5.1.3 Adaptations Regarding the EURO Conversion	27
5.1.4 PBS Euro Tables	28
5.1.5 Table /PBS/DART_9WEX	30
5.1.6 Table /PBS/DART_9WEE	32
5.1.7 Table /PBS/DART_9WEU	32
5.2 Archive Index Material Documents	33
5.2.1 Administration Table	33

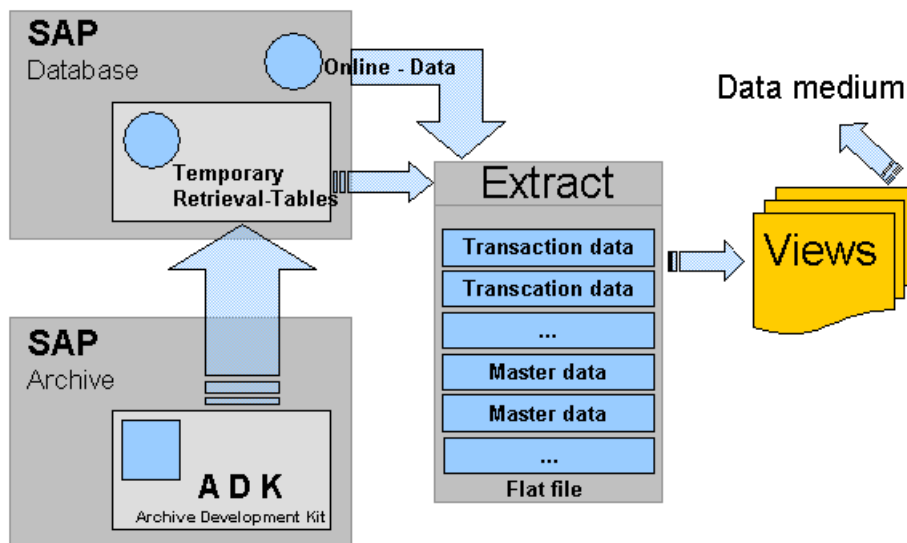
5.3 Archive Index Sales	33
5.3.1 Administration Table	33

# 1. The PBS DART Concept

Within the scope of the new GDPdU, the tax authority can ask for a data extract on which the business records are stored for evaluation purposes. In the SAP environment this is called scenario Z3. The access type Z3 to actual data as well as archive data basically demands a tool that enables that tax-relevant data can be extracted on data carriers, filed for the storage period and can be put at your own disposal for analysis und at the stage of control of the tax authority. In the SAP environment besides the tools SAP BW, SAP Queries, ABAP Reports the SAP Data Retention Tool (DART) can be considered as a solution for this scenario.

DART can be applied immediately, as it is contained in a standard installation SAP and therefore no additional software license fees are raised. DART enables the SAP clients to extract data in a predefined volume and to store the data on external data carriers or a file server for the legal storage period. At the control stage the Views on the data extracts are created, which comply with the demands of the tax authority in respect to volume and period.

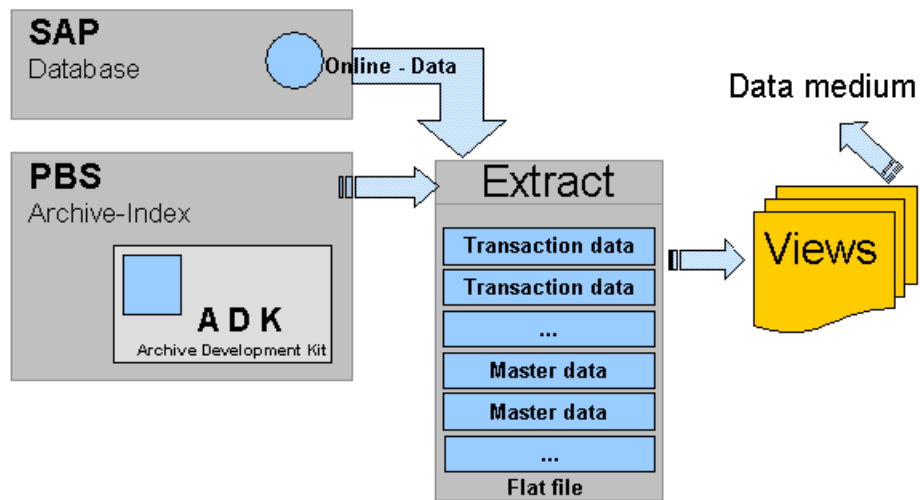
## 1.1 SAP DART Concept



In general, the DART concept takes into account the possibility to make available the reloading in temporary tables of archiving data (not into the original tables) for the extract generation, but, for reasons of runtime, it is not recommended. In the SAP standard the generation of the extract data before starting the archiving process is more often used.

PBS has extended the SAP DART concept in a way that SAP ADK files for DART extract runs are involved in order to avoid the temporary restore of the archiving data into the database. The generated indices of the PBS archive add ons serve as a basis.

## 1.2 PBS DART Concept



Through integration of the SAP ADK files the archiving concept of PBS customers must not be modified. Moreover, the PBS concept has two essential advantages. Firstly, the database can be kept further on in a performant manner by means of consequent archiving and secondly, a permanent storage space for intermediate storage of the extract stocks up to their utilization must not be kept. In our opinion the stocks can be created 'On Demand'.

## 2. Introduction

The **PBS archive add ons** are constructed in modular form and cover the application modules DART, FI, SD, MM, CO etc. with a special program package for exactly this application. You can easily see from the name which *PBS archive add on* belongs to which SAP module: CDART, CFI, CSD, CMM, CCO etc. All *PBS archive add ons* can be easily installed in the SAP system via the transport utility "tp" of SAP AG. This installation guide should help you to simplify the successful installation of the *PBS archive add on(s)*. Please read our recommendations on the installation of the *PBS archive add ons* step by step. The general part, describing the same tasks for all *PBS archive add ons*, is followed by a chapter with module-specific recommendations. Please read the hints listed for your module **before** installing the *PBS archive add ons*.

The modular user manual of each *PBS archive add on* is composed of the partial manuals:

- **Part A: Installation**
- Part B: Administration, Archive Construction and Maintenance

Should you have questions regarding the installation of the *PBS archive add ons* or if you have problems when installing the software please call directly the **Service Hotline of PBS Software GmbH**:

Phone: +49 - 6251 - 174 110  
Fax: +49 - 6251 - 174 174  
Email: [hotline@pbs-software.com](mailto:hotline@pbs-software.com)

### Release Compatibility

The **PBS archive add ons** discussed in this manual run with the basis programs of the SAP AG, 69190 Walldorf/Baden, **4.x, ERP 5.0 and ERP 6.0**.

## 3. The PBS Concept for Software Deliveries

PBS Software GmbH now supplies the *PBS archive add ons* within a unified release strategy. This means for you, the PBS customer, a facilitated management of the different *PBS archive add on* versions and an easier installation of updates and corrections. Each delivery contains a **"Final Release"** and, if necessary, a **"Customer Patch"**. **Please follow the hints below to install the components in the right order!**

### 3.1 Final Release

The **"Final Release"** of a *PBS archive add on* is a complete and extensively tested program package for the corresponding PBS module (DART, CFI, CSD, CMM, CCO ...). Such a **"Final Release"** is always created for each different SAP release (4.0B, 4.5, 4.6B ...). A **"Final Release"** contains all components described in the user manual (parts A, B, C) of the corresponding PBS module and can run on its own. When installing a *PBS archive add on* for the first time, the **"Final Release"** **must be installed first!**

### 3.2 Customer Patch

Having supplied a **"Final Release"** for a *PBS archive add on*, improvements, corrections and additions of the different modules are produced within the PBS development strategy. To provide the users of the *PBS archive add ons* with these news in an easy way, for each **"Final Release"** so-called **"Customer Patches"** are supplied. The **"Customer Patches"** are numbered in chronological order. Each current **"Customer Patch"** contains all improvements, corrections and additions since the delivery of the corresponding **"Final Release"**. Therefore, you do not have to install more than two transports for each *PBS archive add on*.

If you have once purchased and installed a *PBS archive add on*, you can ask for new **"Customer Patches"** within certain periods or if necessary (either by phone or Internet). You will only have to import these relatively small correction transports in order to update your *PBS archive add on*. A **"Customer Patch"** is to be installed **after** the installation of the **"Final Release"**.

## 3.2.1 Password

### **IMPORTANT:**

Starting from the Final Release for CDART 2.4 a Customer Patch installation is only needed when your DART version is 2.5 or higher. Please check your DART version to find out if it is 2.5 or higher. To check your current DART version start transaction SE11 and enter "Dart1" under "type groups". Your current version is displayed under "DART release". Send this information to our hotline that in turn will send you the password so that you can install the Customer Patch.

## 4. Delivery

The programs and documentations of the *PBS archive add on CDART* are supplied as FTP download or on CD ROM. The delivery contains:

- Transport files with all required programs and data files (tables, table entries, data definitions etc.). File directory: **\R3 or ECC** with the subdirectories **\final** for the transports of the *Final Release* and **\patch** for those of the *Customer Patch*.
- R/2 PC Download files with the necessary migration programs and components for the migration of archived R/2 data to R/3 (file directory **\R2**).
- User manuals and documentations in German and English (file directory **\docu** with the subdirectories **\German** and **\English**). The documentation files are supplied in the PDF format and can be read with the **Acrobat Reader**.

## 4.1 Components for the SAP System: Final Release

The data objects supplied for module CDART with the *Final Release* (see previous chapter 3) are listed in an object list which is contained as text file in a subdirectory, for example */R3\_DART\_10/*, for the corresponding DART version. Please review the list of the module to be installed **before** the transport into your SAP system, should it be possible that your system contains transport components of the same name.

From SAP release 4.0, PBS has an own namespace for the specific data objects of the *PBS archive add on* so that no naming collisions should occur. The namespace must be defined before the installation of the *PBS archive add on* (see chapter 4.5).

## 4.2 Customer Patch (Updates and Subsequent Transports)

If you receive a subsequent transport (Customer Patch) for a *PBS archive add on* which has already installed and where you already have carried out **customer-specific modifications**, we recommend for safety reasons, to copy all **changed objects** under another name before the import. After the installation of the new Customer Patch you can update the changes in the newly installed objects.

**Important:** Backup the changes you have made in customizing tables which concern to PBS objects (e.g.: path settings of the PBS archiving objects). The installation of patches or final releases can overwrite your changes!

## 4.3 Installation into the SAP System

The version of the *PBS archive add on* you have ordered must match the release of your SAP system to guarantee a correctly working *PBS archive add on*. The table below gives you an overview of the available *PBS archive add ons*. Please note that some *PBS archive add ons* are supplied in versions matching different SAP releases while other *PBS archive add ons* have special versions for each different SAP put level.

	DART
Rel. 4.6B	DART_46B
Rel. 4.6C	DART_46C
Rel. 4.7	DART_47
Rel. ECC 50	DART_50
Rel. ECC 60	DART_60

Table 1: SAP releases and versions of the *PBS archive add ons*

For the installation of the *PBS archive add ons* the transport control program "tp" (= transports and puts) of SAP AG is used. **tp** is a tool to control and realize transports between SAP systems.

### SAP Put Level and hot packages

PBS always develops the *PBS archive add ons* based on the current **SAP Put Level**, supplemented with the latest available **hot packages**. PBS attempts to keep all modules downward compatible to the corresponding hot packages. However, in some cases conflicts and related problems may occur when installing respectively running certain PBS programs due to different hot package levels (Customer <> PBS). Should you be faced with such a situation please contact as fast as possible the PBS Service Hotline so that the problems can be solved soon.

## 4.4 Country versions for CDART

The installation of CDART requires the installation of the original DART (Data Retention Tool) of SAP either in version 1.0 or in version 2.0. DART 1.0 is only composed of the international (= US) field catalog, DART 2.0 differs between German and international field catalog. The two installation directories /R3\_DART\_10 and /R3\_DART\_20 refer to that version. For DART version 1.0 the transports from directory /R3\_DART\_10 are valid, for DART version 2.0 those from /R3\_DART\_20.

## 4.5 PBS Namespace from Release 4.0

As CSP partner of the SAP AG, a special namespace for development purposes was reserved for PBS Software GmbH from release 4.0. All objects of the *PBS archive add ons* and the PBS utilities are within this namespace and begin with **/PBS/**. You have to define this namespace in your SAP system if you want to carry our changes or customer-specific modifications in the *PBS archive add ons*. Please take care **that the repair license number is entered correctly** (see below)!

**Note:** Instead of manually creating the namespace via SE03, you can install transport **HE4K902993** supplied with the *PBS archive add ons* (directory PBS utilities – R3 – Namespc). All necessary definitions are then carried out automatically!

You can define the new namespace manually via transaction SE03 (**Transport Organizer Tools: ⇒ Administration ⇒ Display/Change Name Spaces**) as shown in diagram 1. Enter the repair license number "**37592095353215894074**" and qualify namespace role with "**C**".

Then set the system changeability for this namespace (**Transport Organizer Tools: ⇒ Administration ⇒ Set System Change Option**).

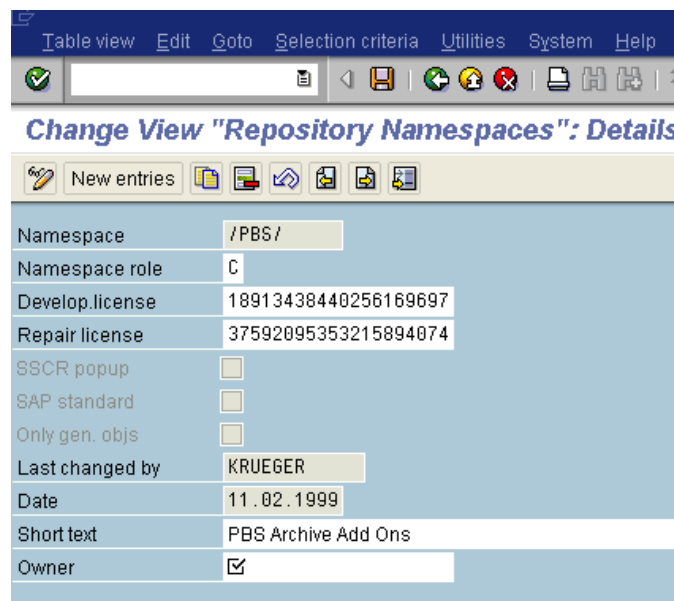


Diagram 1: Creating the PBS namespace

## 4.6 Initial Installation

Enter the subdirectory of the transport files (e.g.: **\CFI40all\R3\final**) in the delivered software you have received. For example, this directory looks like the following:

Inhalt von 'C:\CFI40all\R3\final'				
Name	Größe	Typ	Geändert am	Dateiattribute
K900226.id4	1 KB	ID4-Datei	08.11.99 15:53	A
R900226.id4	16.736 KB	ID4-Datei	08.11.99 15:54	A
log.txt	39 KB	Textdatei	08.11.99 15:45	A

**Diagram 2: Transport files of a PBS module**

File **K900226.ID4** is the **R3Trans command file**, file **R900226.ID4** is the corresponding **data file**. Please transfer both files into the Unix-, AS/400- or Windows/NT environment via FTP. Depending on the module, the directory additionally contains some text files (transport BOM, log) for your information. For example, the file **LOG.TXT** contains the export log of the transport stored in the directory.

The file transfer must be performed with the Unix user: **<target system>adm** (e.g.: HE4adm) carried out in **binary mode** (ftp> bin).

Please import command file **K9zzzzz.yyy** into directory

**/usr/sap/trans/cofiles**

and data file **R9zzzzz.yyy** into directory

**/usr/sap/trans/data**

(**zzzzz** = current transport number, **yyy** = PBS system).

### Please note:

During the transport, the letters used in the file name maybe converted from capital letters to small letters. It is important that you reset this automatic change to be able to start the import via **'tp'** without problems. In Windows/NT environments you have to deactivate the attribute "write-protected" in the file attributes!

**TP IMPORT**

Please carry out the following steps for the actual import of the transport files into the SAP system:

- switch over to the directory `/usr/sap/trans/bin`
  - transfer the transport into the buffer with:  
**`tp addtobuffer yyyK9zzzzz <target system>`**
  - now start the import with:  
**`tp import yyyK9zzzzz <target system> client=xxx`**
- xxx = client  
 yyy = name of the PBS delivery system  
 zzzzz = current transport number

**Please note:**

The *PBS archive add on* can be imported in any client you like. **Exception:** The *PBS archive add on* **CFI must** be installed in a client other than 000, as otherwise the tables for the line construction variants cannot be updated! If the option 'client =xxx' is left out, the programs will be installed into client 000.



**Creation of the PBS-specific file path**

In order to be able to store the flat files of the *PBS archive add on CDART* separately from other data, you must create a physical path directly in the file system of the SAP system. PBS recommends to create an own file directory like `"../pbs/dart_xxx/"` for each *PBS Indexing program* you use. At present, the scope of supply contains the following indexing programs:

Application	recommended file path
Financial accounting	<code>../PBS/dart_cfif/</code>
Material documents	<code>../PBS/dart_cfim/</code>
Sales documents	<code>../PBS/dart_csd/</code>
Purchasing documents	<code>../PBS/dart_cmm/</code>

**The creation of these paths is not necessary, if you have already implemented the PBS archive add ons CFI, CSD and CMM!**

Some *PBS archive add on modules* can address logical path names (in analogy to SAP ADK). In this case, you may possibly omit the creation of an own physical path.

The installation of the **Final Release** has now been finished.

## 4.7 Installation of Updates (Customer Patch)

Depending on the update level, a current **Customer Patch** may exist for a specific Final Release of a *PBS archive add on*. This Customer Patch (and analogue to this all subsequent transports and updates you have received) must be installed **after** the installation of the **Final Release!** The procedure is described in the following.

In case you want to import a new Customer Patch (respectively a subsequent or correction transport) and if you carried out modifications in the *PBS archive add on* you already installed, we recommend to copy all **changed objects (customer-specific modifications!)** under another name before the import procedure for safety reasons. Then, you can update the necessary changes in the new objects after the installation of the new Customer Patch.

For the installation, please carry out all steps similar to the initial installation (chapter 4.6). The only exception is the command "**tp import...**". In case of update deliveries, this command has to be parameterized as follows:

```
tp import yyyK9zzzzz <target system> U26 client=xxx
```

```
xxx    = client  
yyy    = name of the PBS delivery system  
zzzzz  = current transport number
```

Parameter U26 signifies the *unconditional modes 2 and 6*. This means that during the import already existing objects (originals) and repaired objects are overtyped. If you want to repeat an already imported transport again (e.g. because the previous installation was incomplete or has been cancelled), you must substitute parameter **U26** by **U126**.

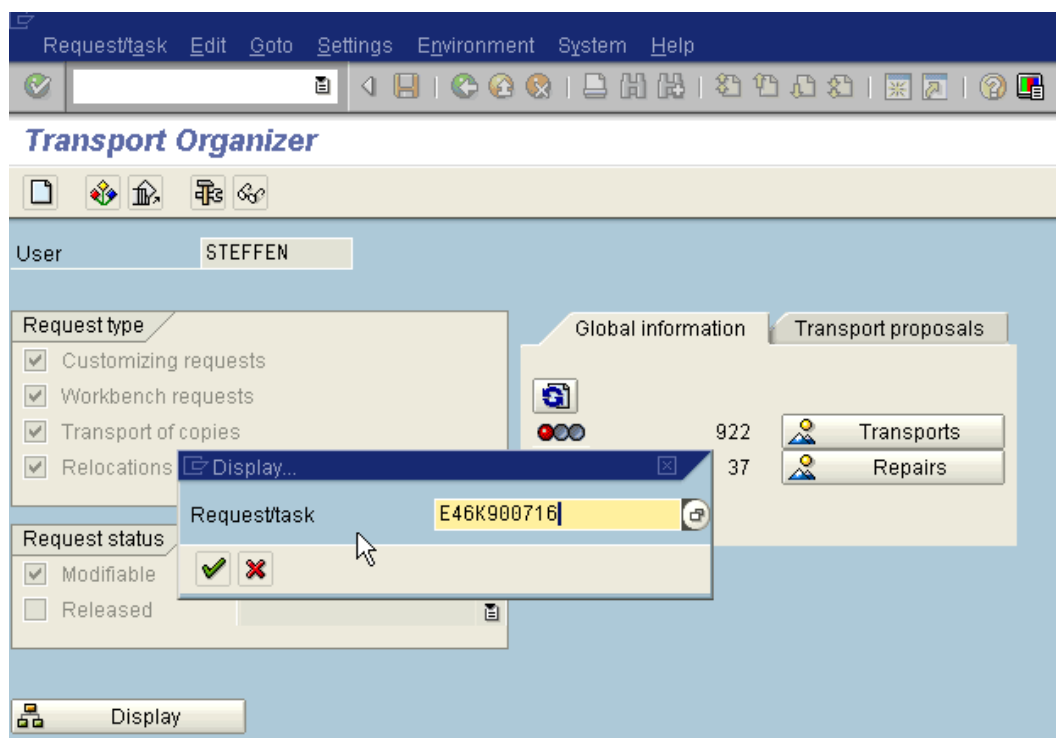
After the installation of a Customer Patch the complete installation of a *PBS archive add on* has been finished.

## 4.8 Supervision of the Installed Transport

From the transport protocols in the SAP system you can see whether the installation of the *PBS archive add on* was successful. From the start menu, please call the transport administration via:

**Tools** ⇒ **ABAP/4 Transport** ⇒ **Overview** ⇒ **Transport Organizer**  
 ⇒ **Request/Task** ⇒ **Display individually**

and enter the transport number of the *PBS archive add on* you have installed (you can also start via transaction **SE09**, then selecting ⇒ **Request/Task** ⇒ **Display individually**):



**Diagram 3: Selection of the imported PBS transport request**

In the selection result, please move to the number of the transport request and press the right mouse key, thus selecting the "Transport logs" from the selection list:

Action log	Ctrl+Shift+F1
Transport logs	Ctrl+Shift+F2
Other request...	Ctrl+Shift+F8

In the list which is now displayed you can click on your system identification and "Import". Open the result list until you get to the required information:

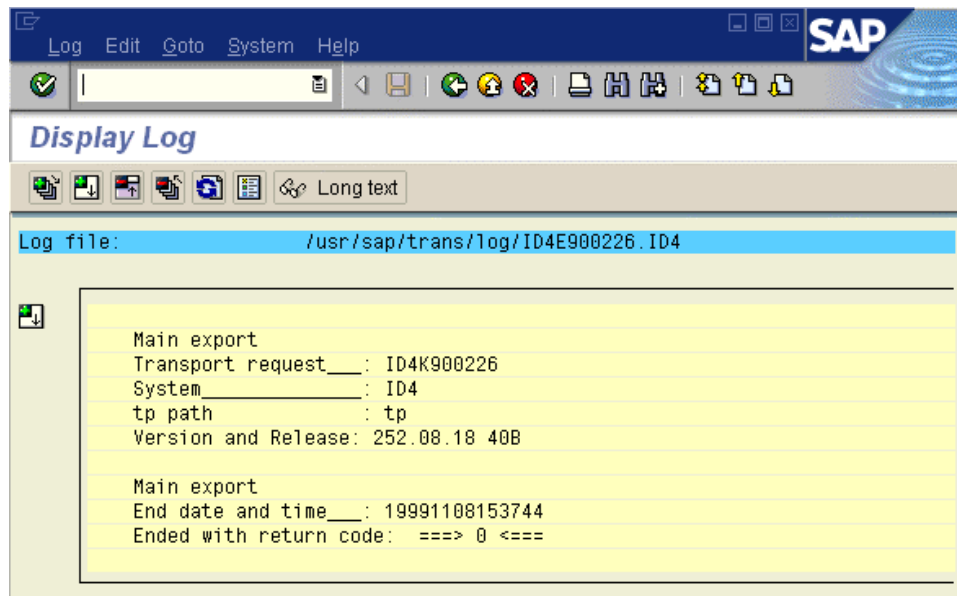


Diagram 4: Analysis transport request

## 4.8.1 Transport into the Production system

In this respect, you basically have to differentiate between two different system environments. Accordingly, you have to select between two different procedures:

### System environment 1

Your production system is contained in the same system like your test system, in which you imported the *PBS archive add ons* before, and only differs in the client:

In this case, a transport is not necessary as all changes are immediately active and available in your production system as well.

### System environment 2

Your production system is installed in another system than your test system.

In this case, you have to export all **customer-specific** modifications (and other repairs of the *PBS archive add ons*) via the transport system before you transport the *PBS archive add ons* in your production system. Normally, for this purpose a transport request was created which has to be released via the Transport Organizer. Then, you can transport the *PBS archive add ons* into the SAP production system, regarding the following steps:

Determine the number of the transport request used to install the actual *PBS archive add on* in your test-system. You can also find this number in the SAP system via:

- up to 3.1z:**Tools** ⇒ **ABAP Transport** ⇒ **Utilities** ⇒ **Maintenance**  
 ⇒ **Corrections** ⇒ **Request** ⇒ **Find** ⇒ **Transport Request**
- from 4.0b:**Tools** ⇒ **ABAP Transport** ⇒ **Utilities** ⇒ **Maintenance**  
 ⇒ **Transport Organizer** ⇒ **Request/Task**  
 ⇒ **Find Requests**

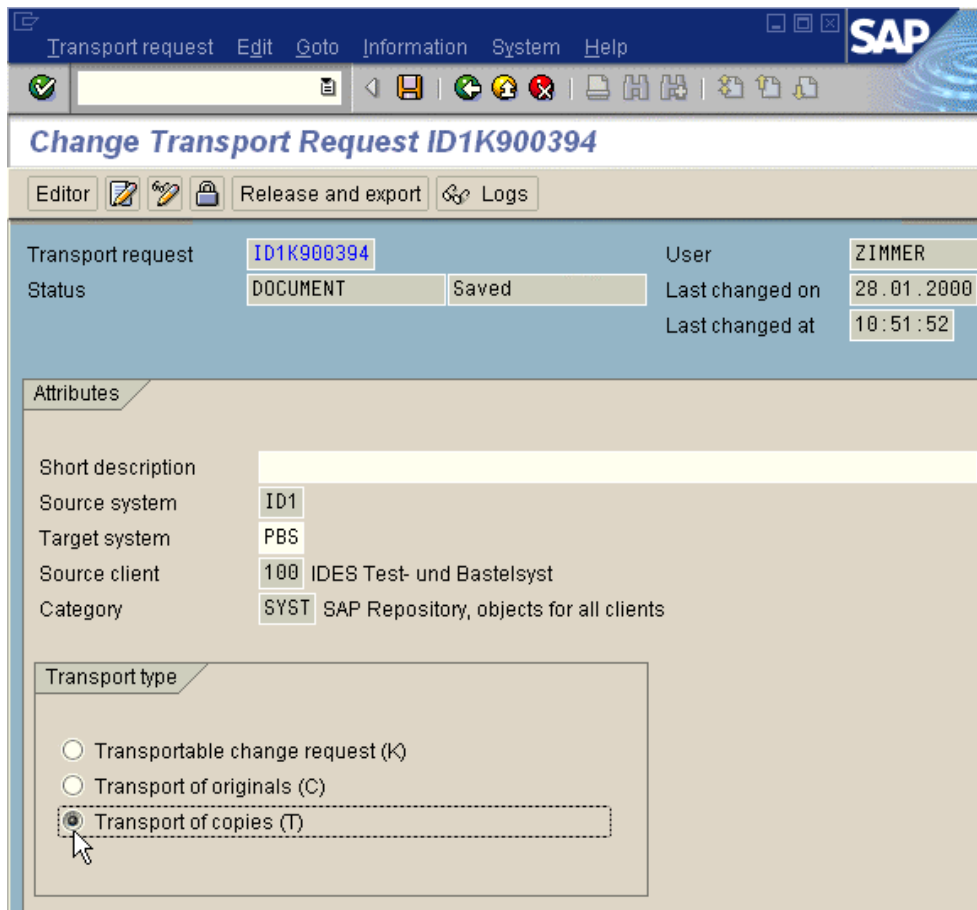
Please enter the PBS source system in the field '**Correction/TR name**':

	Rel. 4.0	Rel. 4.5	Rel. 4.6	Rel. 4.7	Rel. 5.0	Rel. 6.0
Up to now	HE4	E45	-	-	-	-
New delivery concept	ID4	ID5	K46/I46	K47	K50	K60

**Table 2: Source systems of the *PBS archive add ons***

Please write down the required PBS transport number as displayed in the list!  
 Now create a transport request in your system:

**Up to 3.1z: Transaction SE01 (Transport system) ⇒ Request ⇒ Create**



**Diagram 5: Create transport request under 3.x**

Select "**Transport of copies**" and enter a note for the transport request to be created under "Short description". Save your transport request! Now please select from the menu ⇒ **Transport request** ⇒ **Include template**. Please enter the transport of the original PBS transport which you determined before into the POPUP window which opens now. Your transport request can now be released and exported. If you want to make additions or changes to the object list of the transport request, you have to carry out these modifications immediately **before** Release + Export!

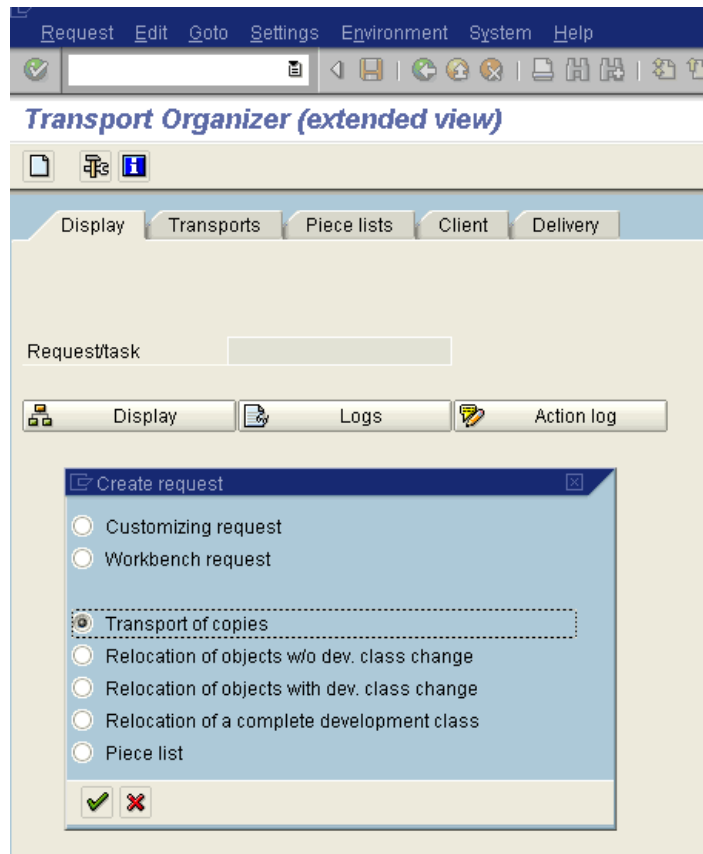
Having completed the export procedure correctly, please import this transport request into your production system as described above.

from 4.0B: Start with transaction SE01 (transport organizer) or via:

**Tools ⇒ Administration ⇒ Transports ⇒ Transport Organizer**

Choose: **Transports of copies and relocs.**

Create a request: ⇒ **Request ⇒ Create**



**Diagram 6: Create transport request from 4.0B**

Select "Transport of copies" and enter a note for the request to be created into the field "Short description". Save your transport! Now you can integrate the original PBS transport number (which you have determined before, see above) via the menu ⇒ **Request/Task ⇒ Object List ⇒ Include Objects** (or key combination *CTRL + F11*) into the current transport request. Now you can release your transport request which is automatically exported then. If you want to make additions or changes to the object list of the transport request, you have to carry out these modifications immediately **before** releasing the request!

Having completed the export procedure correctly, please import this transport request into your production system as described above.

## 4.9 Summary of the Installation

So that you can easily check the installation of the *PBS archive add ons*, the most important steps are summarized below (please check off ✓):

- Check the delivered transports you have received: Completeness of the transport files: Does the PBS delivery contain transports of the "*Final Release*", Utilities and possibly "*Customer Patch*"? (chapter 4)
- Transfer the transport files into the corresponding target directories of your SAP system (**/usr/sap/trans/data** respectively **/usr/sap/trans/cofiles**). Transfer in binary mode! **Attention:** The size of the transferred files must be the same both on the PC and in the SAP system (chapters 4.6 and 4.7).
- Definition of the PBS namespace (chapter 4.5). The PBS namespace must be defined **before** installation of *PBS archive add ons*!
- Import of the transport request into the SAP system with the transport utility **tp**. In case of the *PBS archive add on CFI* please take care that the transport is carried out into a client other than 000! (chapter 4.6 and 4.7)
- At first, import the "*Final Release*" and then (if available) the "*Customer Patch*". Check the transport logs via the "Transport Organizer" (chapter 4.8)
- Create a module-specific file directory (e.g.: /PBS/CFI/) in your file system (Unix, Windows/NT, AS400) to store the sequential files of the *PBS archive add on*
- The PBS namespace must be defined (from release 4.0B) (chapter 4.5) to carry out customer-specific changes/modifications.
- Transfer the *PBS archive add on* into your production system (chapter 4.8.1).

Please see the features in the following chapter!

## 4.10 Peculiarities under Operating System AS/400

The installation under the operating system AS/400 can be generally carried out as under UNIX or Windows NT. Copy the transport files to be installed in the directories /usr/sap/trans/cofiles and /usr/sap/trans/data. It is important that the user has the <TARGETSYSTEM>OPR (instead of <targetsystem>adm in case of UNIX) rights for writing and reading files, i.e. they must have the Primary Group R3GROUP. <TARGETSYSTEM> indicates as variable the 3 digit name of the SAP system in which the software is to be installed. While carrying out the transport, the same user has to start the tp command from the directory /usr/sap/trans/bin. The command syntax is:

- Change into the transport directory with:  
**cd '/usr/sap/trans/bin'**
- Transfer the transport into the buffer with:  
**tp 'addtobuffer yyyK9zzzzzz <targetsystem>'**
- Carry out the import with:  
**tp 'import yyyK9zzzzzz <targetsystem> client=xxx'**

yyyK9zzzzzz indicates the number of the request which we supply. This number can vary from shipment to shipment. <Targetsystem> is your system name. If it is not an initial installation but an update, it is necessary to add u26 (i.e. unconditional mode 2 and 6) in the tp commands so that the PBS programs already available can be redefined. It is necessary only for the PBS archive add CFI to indicate the user by adding client=xxx.

After the installation define as a second step the PBS archive directories. Define one directory for each PBS archive add on at least, corresponding to the number of load programs.

- Define a directory with /pbs/csd :

**MD DIR( '/pbs/dart\_csd' )**

The names of the defined directories have to be indicated in the PBS load programs to construct the archives (see administrator manual).

## 5. Module-Specific Features

Important:

The following activities are only necessary in case of using the PBS CDART without the implementation of PBS archive add ons CMM, CSD, CCO, CFI.

### 5.1 Archive Index Financial Accounting

#### 5.1.1 Administration Table

After installation of a "Customer Patch" the administration table of an already created archive index must be filled again. It can be done by execution of `/PBS/DART_CFIFFILE` (maintain administration table). You can also start the program from the main menu of *PBS archive add on DART*:

⇒ **Accounting** ⇒ **Financial Accounting** ⇒ **Activate Archive Index**

Please consider the correct entry of the PBS file path!

#### 5.1.2 Euro Functionality

Basically, you have to understand that the EURO is introduced in two steps. EURO Phase 1 means that the present SAP system is able to display business transaction in the new currency EURO. All SAP users are obligated to start this phase on January 1, 1999. EURO Phase 2 contains, in addition, the conversion of the current local currency to EURO and is to be realized until December 31, 2002. This change is mainly related to the conversion of the database data. The conversion of the already archived data is not supported by SAP.

Already at present, all PBS archive add ons meet the requirements for EURO Phase 1. In all SAP systems the transactions to be displayed in EURO are treated as a foreign currency. This functionality is already guaranteed by the so-called "Two-Currency-System" of the SAP standard. All transactions posted and archived in EURO are completely transferred by the PBS index build programs into the PBS archive file system. Therefore, no activities with regard to the PBS archive add ons are necessary for EURO Phase 1.

For EURO Phase II (conversion of the local currency) after the update of the program package the necessary functionality in analogy to the SAP standard is available. To guarantee the correspondence of the SAP archive files with the data of

the PBS archive file system, the data of the PBS archive file system is not converted.

During the search in the archive data the old local currency is converted to EURO when the found document is displayed. During the runtime, the different lines are converted from the old local currency to the EURO. Possible rounding-off differences are displayed in a separate line. This does not apply for documents which have been archived and loaded into the PBS archive add on after the conversion of the local currency. The conversion is related to the fields of the display transactions via the secondary index and to the single document.

The fields to be converted during the runtime from the historical local currency into the EURO, is controlled by the access to the table Z9WEU (from 4.0B: /PBS/DART\_9WEU).

In general, this technique allows navigating between the current local currency, the historical local currency and - if necessary - the foreign currency in the single document display.

In the PBS evaluation databases as well the data is converted during the runtime into the new local currency. All evaluations in the old local currency are displayed via the SAP standard functionality.

To be able to use this new PBS technique an update of the PBS archive add ons used is necessary, however, the PBS archive file system must not be constructed again.

In chapter 2.10 (CFI user manual) we have summarized the adaptations which are necessary in the environment of the PBS archive add on CFI. Under 'Activities' the tables to be updated are listed. In chapter 2.10 we explain how to maintain these tables. Having finalized the Customizing you can check the adaptations with the help of program /PBS/DART\_CFI\_EURO.

**Important:**      **Should you already be user of the PBS archive add on CFI you must not carry out the following instructions.**

### 5.1.3 Adaptations Regarding the EURO Conversion

The following scenarios explain the necessary activities the SAP user of the PBS archive add on CDART have to realize for the domain financial accounting/material documents as soon as the local currency has been converted to EURO. In general, the settings can be carried out via the PBS CDART menu under

⇒ **Customizing** ⇒ **Financial Accounting** ⇒ **EURO Functionality.**

Scenario 1: R/3 user no data migration from R/2

- Case 1): No data was archived before the EURO conversion in R/3  
**Activities:** None
- Case 2): Data was archived before the EURO conversion  
**Activities:** Maintenance of table /PBS/DART\_9WED

Scenario 2: R/3 user with archive data migration from R/2 migration objects BELA/MBLA

- Case 1): EURO conversion is realized under R/3  
**Activities:** Maintenance of table /PBS/DART\_9WED
- Case 2a): EURO conversion is realized under R/2; the archive data is converted  
**Activities:** Maintenance of table /PBS/DART\_9WED
- Case 2b) EURO conversion is realized under R/2; the archive data is **not** converted.  
**Activities:** 1. Maintenance of table /PBS/DART\_9WED  
2. Maintenance of table /PBS/DART\_9WEE .

Scenario 3: New partner countries enter the European Monetary Union

- Case 1): The local currency is not converted before the country has entered the European Monetary Union.  
**Activities:** None.
- Case 2) The local currency is converted before the country enters the European Monetary Union.  
**Activities:** Maintenance of table /PBS/DART\_9WEX

## 5.1.4 PBS Euro Tables

### Table /PBS/DART\_9WED

In order to guarantee a conversion without problems the table /PBS/DART\_9WED must be maintained in all clients where the PBS archive add on CFI is used. For each PBS application an entry is made in this table stating if the loaded archive stock contains the amounts in EURO or in the old local currency. Two dates have to be entered for each PBS archive add on:

1. Date when an SAP archive tape was loaded for the last time in the old local currency into the PBS archive add on. The parameter 'Archive in EURO' must be qualified with SPACE.
2. Date until which the loaded SAP archives are in the EURO format. The parameter 'Archive in EURO' is to be qualified with 'X'.

The date is related to the date of the run when the SAP document archive tape was merged to the PBS archive add on.

Example:

All archives loaded until 30.06.1999 still contain the old local currency. The loaded archives are in EURO.

**Data Browser: Tabelle /PBS/UTIL\_9WED**

MANDT	APPL	DATUM	UMSETZUNG
003	CFI	30.06.1999	
003	CFI	31.12.1999	X

In case you load an archive file, containing data in the old local currency, after the PBS archive has been constructed with EURO data, an additional entry must be added to the table.

Example:

All archives loaded until 30.06.1999 still contain the old local currency. Archives loaded at a later date are in EURO. On 30.12.1999 you load an SAP archive tape containing data which is not yet in the EURO format.

**Attention:**

If your company is situated in a country of the European Community and if the local currency has already been converted to the EURO, there are two different types of SAP archive files: i.e. such files created before the conversion of the local currency (e.g.: "DEM archives") and such files created after ("EURO archives"). When loading these SAP archive files into the PBS archive add on you must take care that on the same day either only DM archives or only EURO archives are processed.

## 5.1.5 Table /PBS/DART\_9WEX

Extended functionality for new member states having joined the European Monetary Union after January 1, 1999:

Instead of table /PBS/DART\_9WED) table PBS/DART\_9WEX) is checked for the new company codes.

In order to guarantee a conversion without problems the table /PBS/DART\_9WEX must be maintained in all clients where the index build program for FI data is used. For each PBS application an entry is made in this table stating if the loaded archive stock contains the amounts in EURO or in the old local currency. Normally, two dates have to be entered for each PBS archive add on:

- Date when an SAP archive tape was loaded for the last time in the old local currency into the PBS archive add on. The parameter 'Archive in EURO' must be qualified with SPACE.
- Date when an SAP archive tape was loaded for the last time in the old local currency into the PBS archive add on. The parameter 'Archive in EURO' is to be qualified with 'X'.

The date is related to the date of the run when the SAP document archive tape was merged to the PBS archive add on.

Example:

From January 1, 2001, Greece will be the twelfth country to introduce the EURO.

All archives loaded until 30.03.2001 still contain the old local currency. The loaded archives are in EURO.

Co...	Appl	Doc. date	+	
0017	CFI	30.03.2001		▲
0017	CFI	31.12.9999	⊞	▼

In case you load an archive file, containing data in the old local currency, after the PBS archive has been constructed with EURO data, an additional entry must be added to the table.

Example:

All archives loaded until 30.03.2001 still contain the old local currency. Archives loaded at a later date are in EURO. On 30.12.2001 you load an SAP archive tape containing data which is not yet in the EURO format.

**Attention:**

**If your company is situated in a country of the European Community and if the local currency has already been converted to the EURO, there are two different types of SAP archive files: i.e. such files created before the conversion of the local currency (e.g.: "DM archives") and such files created after ("EURO archives"). When loading these SAP archive files into the PBS archive add on you must take care that on the same day either only DM archives or only EURO archives are processed.**

It is not necessary to maintain table /PBS/DART\_9WEX) if, at the time of the local currency conversion of the SAP system, all relevant company code currencies are originated from member states of the European Monetary Union.

In this case only table /PBS/DART\_9WED) must be maintained.

### 5.1.6 Table /PBS/DART\_9WEE

Table /PBS/DART\_9WEE must be maintained if the EURO conversion has been carried out under R/2 and the archive data has been migrated from R/2 to R/3 via DMIG object BELA respectively MBLA. If archived financial accounting documents (SAPB80U files) have already been converted EURO under R/2, table /PBS/DART\_9WEE must **not be maintained**. For each company code, the former local currency and the day of the EURO conversion is to be entered. Company codes having the same local currency can be maintained generically with '++++'.

BuKr	HW alt	gülig bis
++++	DEM	31.12.1999
0053	FIM	31.12.1999

### 5.1.7 Table /PBS/DART\_9WEU

Table /PBS/DART\_9WEU contains for each PBS archive application all relevant fields converted to the EURO during the runtime. If you have added own EURO-relevant fields to the PBS archive add on CFI they can be added to the fields provided by PBS.

## 5.2 Archive Index Material Documents

### 5.2.1 Administration Table

Having installed a "Customer Patches", an existing archive administration table of the already created archive index has to be filled afresh. This is achieved by starting program **/PBS/DART\_CFIMFILE** (maintain administration table). You can also start the program from the main menu of the *PBS archive add on DART*:

⇒ **Logistics** ⇒ **Materials Management** ⇒ **Material Documents** ⇒ **Activate Archive**

Please take care that the PBS file path is entered correctly!

## 5.3 Archive Index Sales

### 5.3.1 Administration Table

Having installed a "Customer Patches", an existing archive administration table of the already created archive index has to be filled afresh. This is achieved by starting program **/PBS/DART\_CSD\_FILE** (maintain administration table). You can also start the program from the main menu of the *PBS archive add on CDART*:

⇒ **Logistics** ⇒ **Sales** ⇒ **Activate Archive Index**

Please take care that the PBS file path is entered correctly!