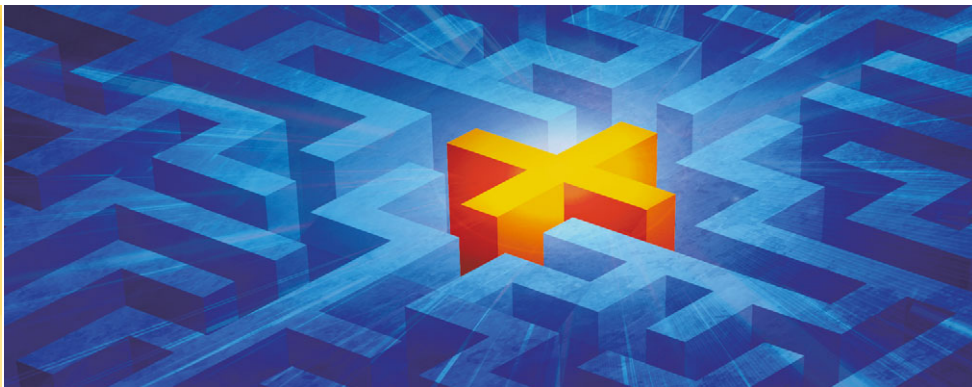


PBS Inside NEWS

Q4, 2008

Information and News from PBS Software GmbH



Dear reader,

Be honest, where do you store your enterprise data? Split up within different systems? Increasing numbers of SAP users are showing interest in a systematic and comprehensive data storage solution for strategic and economic reasons, and in return they are being rewarded with economic advantages and greater credibility. Data Quality and Data Governance are the respective catchwords here. The Data Warehouse is still the right place for the consistent storage of data for data analysis and reporting purposes. In the SAP BI environment, relational databases are used for this. With the new SAP nearline storage concept for SAP BI, it is now also possible to implement completely innovative technologies. PBS uses the column-based analytics server Sybase IQ for its NLS solution that enables extremely fast and flexible access to huge volumes of data. This was demonstrated very impressively at our CBW Workshop using BI MultiProvider queries. An additional advantage is the high degree of data compression that reduces memory costs and I/O operations. At the same time, the solution is completely integrated with ADK technology. Furthermore, it is not even mandatory to have a separate IQ server as long as you can provide enough CPU in your system. You also only have one contact person. Make use of this opportunity to start using a convenient and forward-looking technology.

With best regards
Günther Reichling

Advantages of PBS CBW NLS on Sybase IQ now also available for SAP BI 3.x

With the nearline storage interface, SAP Business Intelligence 7.0 customers are able to benefit from the advantages of the column-based analytics server Sybase IQ. This was not possible up until now for SAP BI 3.5 customers. The use of Sybase IQ is now also possible with the newest PBS CBW version for 3.x. This enables fast ad-hoc analyses to be performed with low administrative effort at the same time as compressing the nearline data. The new PBS nearline storage variant is called PBS archive add on CBW IQ because it is an enhancement of the purely ADK-based PBS archive add on CBW.

The PBS archive add on CBW IQ requires SAP BI data archiving with ADK technology to have been performed successfully and makes possible the transfer of the archived SAP BI data to the Sybase IQ server. When doing this, the column-based IQ technology enables an ex-

tremely fast access, as was already illustrated very clearly at the PBS CBW Workshop in June of this year using SAP NetWeaver BI 7.0. The display of the nearline data is also supported using MultiProvider queries. If no MultiProviders are available they can be generated in the PBS CBW Cockpit.

The use of this technology is particularly suitable when preparing a migration to SAP NetWeaver BI since archiving that has been performed consistently previously enables the migration to be structured much more efficiently. Afterwards, the nearline data generated under SAP BI 3.5 is also made available under SAP NetWeaver BI 7.0 via the nearline concept. Please contact us or one of our partners if you would like to test the brand new PBS archive add on CBW on Sybase IQ free-of-charge and without obligation. You will find an overview of PBS partners on our website at: www.pbs-software.com/partner

Data access without an SAP System

PBS Enterprise Content Store

When company restructuring results in legacy systems containing data, for which an obligation to disclose information exists, the question arises how historical data should be accessed in the future because the provision of the respective "historical" hardware, the licenses for the respective software, as well as the personnel resources can be very expensive.

SAP data access after system decommissioning

With the new PBS Enterprise Content Store (ECS) you can continue to access structured and unstructured SAP data even after a system has been decommissioned. The client/server-based solution enables you to evaluate SAP DART extracts, PBS Data Export Interface extracts, SAP print lists, as well as original documents linked to SAP without an SAP system. The links between the tax-relevant records and original documents also continue to exist out-

side the SAP system. When doing this, the display is performed from the storage system you are using, such as from PBS ContentLink.

Prerequisites for an SAP-independent data access

In order to be able to access structured data of inactive SAP systems, data extracts are first generated from the SAP database and the archives in a transparent readable format, for example using DART or the PBS Data Export Interface. Unstructured documents such as print lists must be stored in your system. At the same time, it is important to also extract information about the context and links. The tools for doing this are included in PBS ECS.

> Continued on page 2

Continued: Data access without an SAP System

PBS Enterprise Content Store

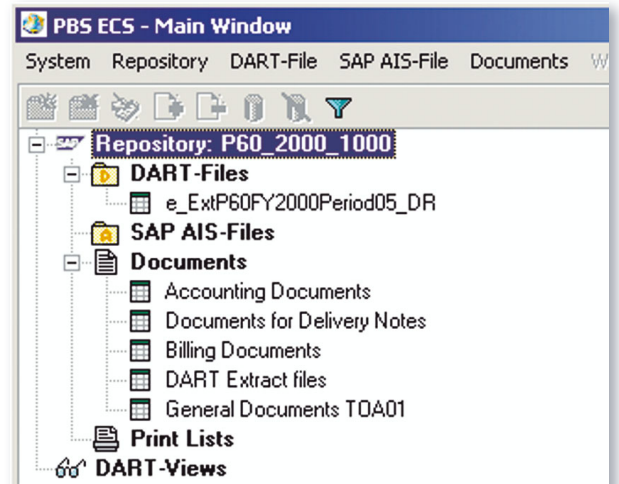
Security via a multi-level authorization concept

The role-based PBS ECS authorization concept that can be used to define varying user views for different user groups, or also individual access rights to individual DART extracts, protects your confidential SAP corporate data from being accessed by unauthorized users.

Straight-forward data transfer

You can easily perform a data transfer, for example, within the scope of internal or external audits, using PBS ECS. This is because the solution converts SAP-specific formats into generally readable formats if necessary, so that these can also be read and evaluated by other programs such as MS Excel® or IDEA®, audit software of the tax authorities.

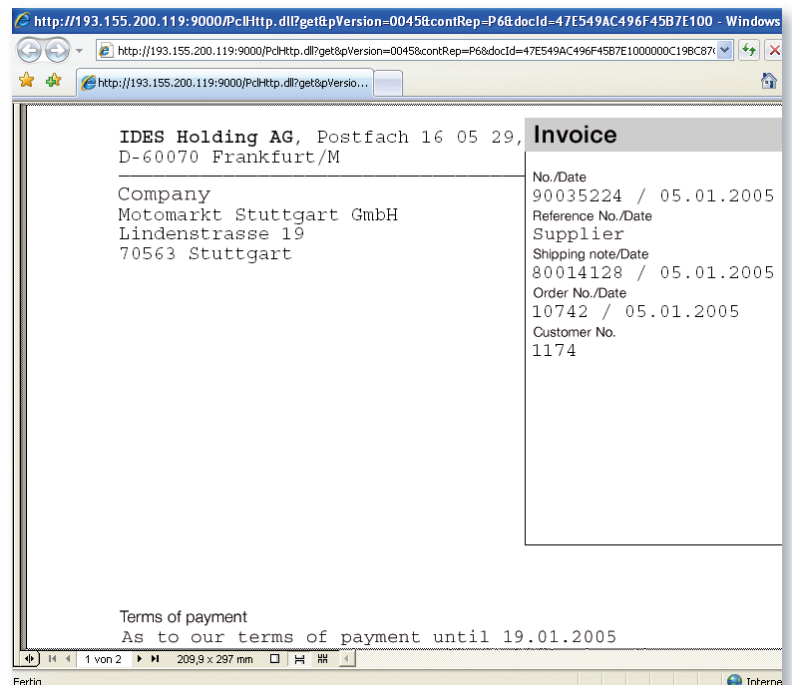
PBS ECS is available from the fourth quarter of 2008. Please contact us if you are interested in this solution.



Repository overview

PBS Enterprise Content Store – Overview of functions and advantages:

- Fast access to:
 - Structured data from SAP DART extract view, SAP views (AIS format), and PBS Data Export Interface
 - Unstructured data such as input and output documents and print lists
- Connection to all storage systems with SAP ArchiveLink certificate
- Business Content
Preconfigured DART views on SAP report basis
- Structured data administration thanks to sophisticated repository concept, for example, structured by SAP system or client



Document access to the storage system including authorization check

Store SAP data according to legal requirements and save costs

PBS ContentLink

Successful enterprises are characterized by the proactive planning, steering, and control of their business processes. SAP supports them in their strategic structuring and organization. Data and documents on the other hand are a valuable part of every process and must therefore be managed in a secure and – at the same time – the most inexpensive way possible.

Data Management

PBS ContentLink supports the central management of SAP data and at the same time links the SAP processes to their corresponding documents. This applies for SAP data and documents belonging to all SAP applications such as ERP, CRM, BI, etc. In this role, PBS ContentLink is not a document management system, but instead a software interface between SAP and modern storage systems that support compliant archiving for SAP

- Document administration
 - Data archiving
 - Data extracts (DART)
 - Print lists
 - Business documents
 - Records & case management
 - Document Finder and TREX full text search
 - Scanner connection
- as well as workflow integration by third-part software vendors

Document queries

Since just recently it is also possible to search for records with linked documents via Web browser or SAP GUI using PBS ContentLink.

Compliant data storage

PBS ContentLink already assigns retention periods and storage deadlines when saving the data via the SAP protocol ArchiveLink and stores it directly in a compliant storage system. This ensures that the data is saved in an unchangeable format. The new SAP WebDAV ILM 2.0 protocol is also supported by PBS ContentLink. This means that a future-proof implementation with the new ILM Solution from SAP components Retention Manager and Retention Warehouse is now also possible.

Good performance with cost savings

All in all PBS ContentLink comprises a great deal of DMS functionality, which is why it

lends itself to being an inexpensive alternative to a content management system as long as document management is performed using SAP standard means. Numerous PBS customers confirm that the use of PBS ContentLink reduces the total operating costs through the relief of operative systems as a result of no persistent data being stored on the PBS ContentLink server. It neither requires its own database nor its own user interface. Another of its advantages is its good performance in cases where there is high data throughput on inexpensive hardware. Its fast implementation also contributes to the reduced costs. Last but not least, the stability and reliability of PBS ContentLink also plays an important role as regards customer satisfaction, even when large data volumes are concerned.

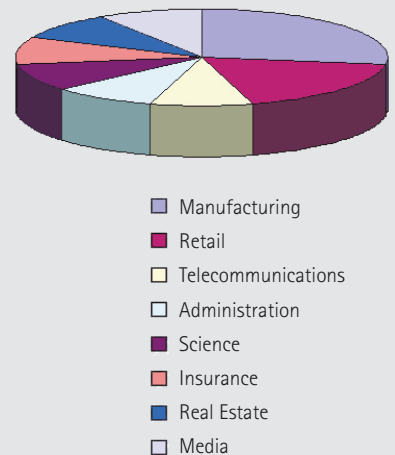
PBS ContentLink in the SAP US market

Dr. Werner Hopf, PBS Partner and CEO of Dolphin Corporation in Philadelphia, USA, gave an impressive account of how PBS ContentLink is standing its ground in the US market at the PBS Archiving Day 2008. You can find his key messages summarized in the charts accompanying this article.

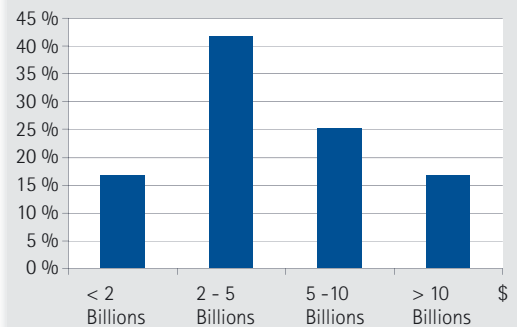
Dr. Hopf substantiated his statements using examples of case studies such as that of a large truck manufacturer that uses the SAP modules SD, MM, and also partly FI/CO to sell spare parts via the internet, and this for peak loads of up to 5000 internet users. The PBS ContentLink solution was implemented by the company to reduce the storage costs and to improve the system performance. The requirements included performing data archiving for very large application data volumes with a short retention period and a transparent access to archived information both for internal users and dealers who place orders via the internet. An additional requirement was the archiving of orders and invoices in PDF format, as well as the bundled issuing of dealer invoices (for example, per day, week, or month).

The results can clearly be seen because the data volume was reduced by up to 50 percent and the average response time reduced by 20 percent, even though there were 10 million archived PDF documents, as well as more than 20,000 PBS ContentLink accesses per day. You can find the complete presentation on our website under the News section.

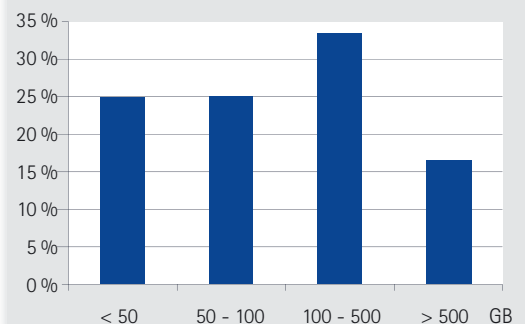
PBS ContentLink share by industry in the SAP US market



Size of the US enterprises by annual revenue



Data volumes that PBS ContentLink handles per month



Take the opportunity to test our software free-of-charge and without obligation.

PBS Product Overview

| PBS Software Component | Description | SAP Component |
|--------------------------------|---|---------------|
| Database Analyzer PLUS | Check database capacity, document distribution, archivability | SAP ERP, R/3 |
| BI Database Analyzer | Check database capacity and data distribution for SAP BI objects | SAP BI |
| Database Export Interface | Data extraction from the SAP database | SAP ERP, R/3 |
| Database Export Interface IS-U | Data extraction from the SAP IS-U database | IS-U/CCS |
| Fiscal Year Reporter | Effective fiscal year management for FI accounting | FI |
| IDA | SAP independent DART access | All |
| Enterprise Content Store | SAP independent data access (decommissioning) | All |
| ContentLink | Interface between SAP and archive systems via ArchiveLink or WebDAV | All |
| SE16_PERSONAL | Table-based process analysis | All |
| SE16_PERSONAL ISU | Table-based process analysis for SAP IS-U | IS-U/CCS |

| PBS archive add on | Description | SAP Component |
|--------------------|--|---------------|
| CAB | Agency business (SAP IS-Retail) | LO-AB |
| CBW | SAP Business Information Warehouse | SAP BW 3.x |
| CBW NLS ADK | SAP NetWeaver BI - ADK-based NLS solution | SAP BI 7.x |
| CBW NLS IQ | SAP NetWeaver BI - NLS solution with Sybase IQ | SAP BI 7.x |
| CCMD | Customer master data | FI |
| CCO | CO line items and totals records | CO |
| CCOPA | Costing-based profitability analysis | CO/PA |
| CCU | Master data changes | SAP ERP, R/3 |
| CCU-IS | Master data changes for SAP Industry Solutions | SAP IS |
| CDART | Archive enhancement for Data Retention Tool (DART) | SAP ERP, R/3 |
| CDOC | Archived print documents | SAP ERP, R/3 |
| CFI | Financial accounting and material documents | FI, MM |
| CFICA | Contract Accounting | FI-CA |
| CHR | HR archiving objects | HR |
| CISU | ISU/CCS documents | ISU/CCS |
| CML | Material ledger documents | CO |
| CMM | Purchasing documents | MM |
| CMT | Material master data, batches, special stocks and BOMs | MM |
| COO | CO order | CO |
| CPCA | Profit center line items | EC-PCA |
| CPCP | Product cost planning | CO |
| CPM | Plant maintenance | PM |
| CPP | Production orders | PP |
| CPR | Process orders | PP |
| CPS | Project system | PS |
| CQM | Quality management | QM |
| CRW | Routing and work center | CO |
| CSD | Sales and distribution | SD |
| CSL | Special ledger documents | FI |
| CUSTOM BW | Customer-specific tables (Z tables) | SAP BI |
| CUSTOM ERP | Customer-specific tables (Z tables) | SAP ERP, R/3 |
| CUSTOM IS | Customer-specific tables (Z tables) for SAP Industry Solutions | SAP IS |
| CVMD | Vendor master data | FI |
| CWM | Warehouse management | LE |

Imprint

PBS Inside News, Issue October 2008
 Published by:
 PBS Software GmbH,
 Schwanheimer Straße 144 A,
 64625 Bensheim
 Germany
 Editor:
 PBS Software GmbH · Managing editor: Michalina Malinowski.
 Design and production:
 topidentity, Gesellschaft für Digital- und Printmedien mbH, Bensheim, www.topidentity.de
 Copyright:
 PBS Software GmbH, Bensheim
 All rights reserved. All photos and graphics are protected by copyright. Reproduction and any type of duplication or copying only with prior consent of the publisher.
 PBS archive add ons® is a registered trademark of PBS Software GmbH.
 SAP ERP, SAP NetWeaver Business Intelligence, SAP Archive-Link are registered trademarks of SAP AG. NetApp Filer is a registered trademark of NetApp, Sunnyvale, USA; IBM DR550 of IBM, New York, USA. Sybase is a registered trademark of Sybase Inc., Dublin, CA, USA