



Zukunftsorientiert:

Apps als ergänzende Technologie

Gernot Reichling
Nicolas Bopp
Experte für SAPUI5



Agenda

SAP Fiori

PBS mit SAP Fiori

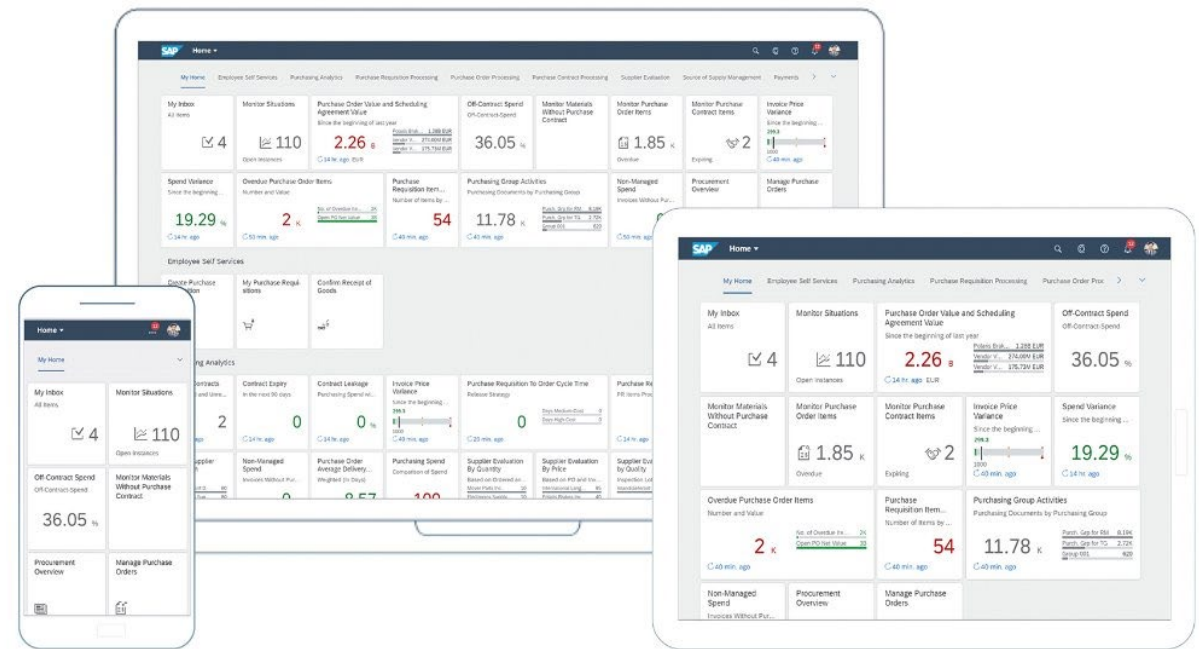
Demo

Projektlauf

Zusammenfassung

SAP Fiori

Eine Übersicht



Quelle: <https://blogs.sap.com/2019/09/20/first-parts-of-sap-fiori-3-available-for-on-premise-customers-sap-s4hana-and-sap-business-suite/>

SAP Fiori: Entwicklung

SAP Fiori 1.0

- 2013
- Eclipse Studio

SAP Fiori 2.0

- 2016
- Web IDE
- Extension Projects

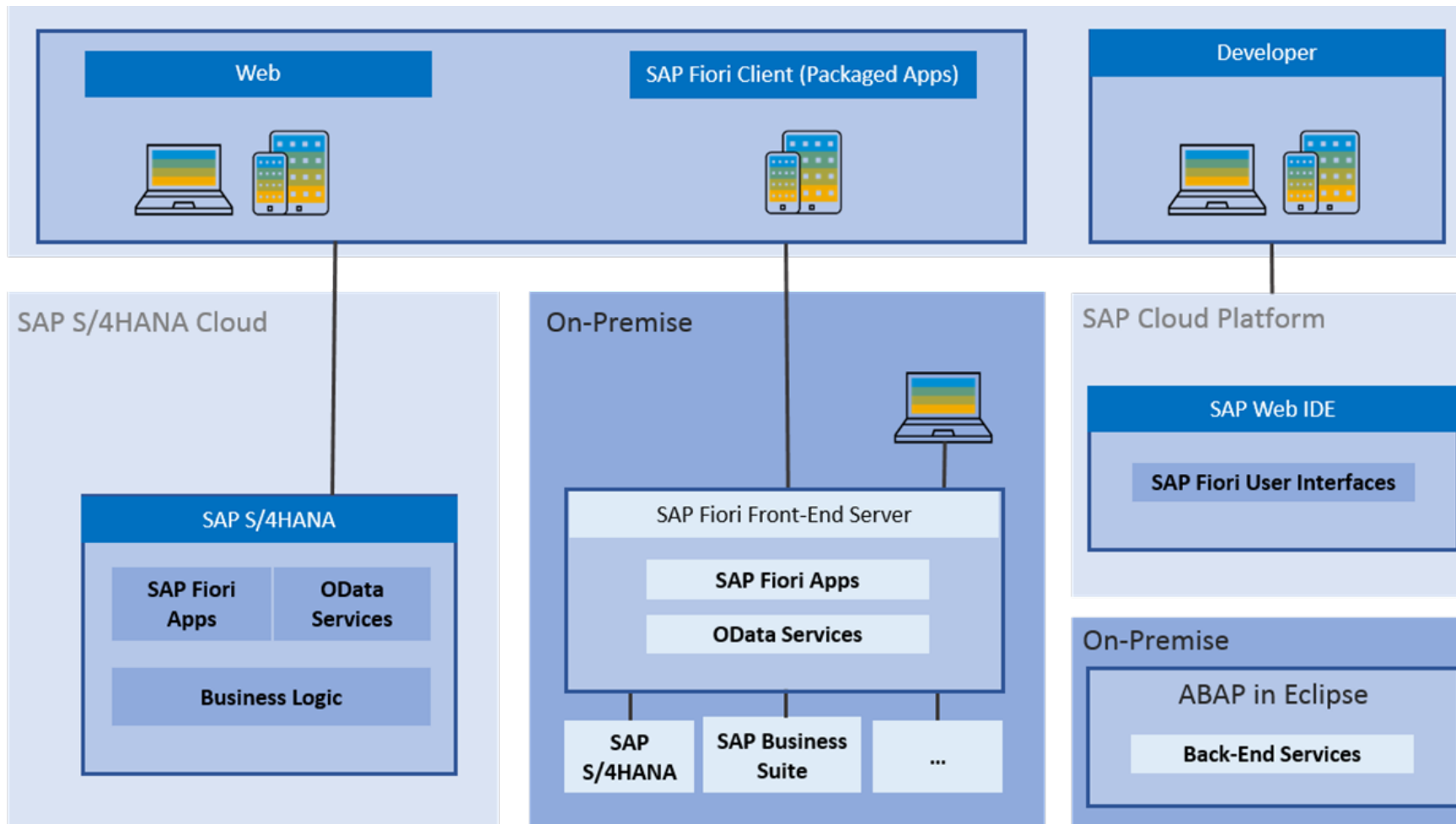
SAP Fiori 3.0

- 2019
- Business Application Studio
- Adaptation Projects

SAP Fiori: Versionsübersicht

Version	Maintenance Status	End of Maintenance	End of Cloud Provisioning	SAP_UI version*	Front-end Server*
1.102(2205)	Maintenance	Q1/2023	Q1/2024	7.57	SAP FIORI FES 2022 FOR S/4HANA
1.96 (2111)	Maintenance	Long-term Maintenance, Q4/2024	Q4/2025	7.56	SAP FIORI FES 2021 FOR S/4HANA (SAP Note 3050199)
1.84 (2011)	Maintenance	Long-term Maintenance, Q4/2023	Q4/2024	7.55	SAP FIORI FES 2020 FOR S/4HANA (SAP Note 2919182)
1.71 (1910)	Maintenance	Long-term Maintenance, Q4/2027	Q4/2028	7.54	SAP Fiori FES 6.0 (SAP Note 2775163)
1.38	Maintenance	Long-Term Maintenance, Q4/2027	Q4/2028	Only via UI add-on 2.0	n/a (see SAP note 2210123 and SAP note 2972680)
1.101 (2204)	Out of maintenance		Q2/2023	Cloud only	Cloud only
1.100 (2203)	Out of maintenance		Q2/2023	Cloud only	Cloud only
1.99 (2202)	Out of maintenance		Q2/2023	Cloud only	Cloud only
1.98 (2201)	Out of maintenance		Q1/2023	Cloud only	Cloud only
1.97 (2112)	Out of maintenance	Q1/2022	Q1/2023	Cloud only	Cloud only

SAP Fiori: Architektur



SAP Fiori: Apps

Welcome to the SAP Fiori Apps Reference Library!

Explore, plan and implement SAP Fiori, the latest user experience from SAP including all relevant content for the SAP Fiori launchpad.

Find out how to get the most out of SAP Fiori Apps Reference Library in the [help portal](#).

Find out how you can take advantage of SAP Fiori with our [SAP Fiori lighthouse scenarios](#) designed to deliver immediate business benefit to SAP S/4HANA customers.

SAP FIORI LIGHTHOUSE SCENARIOS UPDATED

You can learn more about SAP Fiori at our website or see SAP Fiori in action with a [free trial](#).

[Read More](#) about the SAP Fiori apps reference library.

Custom Code Migration

for Project Manager - IT

Item	Category	Impact	Resolution
1. Synchronize search for ranges of simplified objects	Functionality incompatible change of existing functionality	High	Automatic Qualifier Available
2. Synchronize search for database operations	DB Operation (SELECT) Error	Medium	Automatic Qualifier Available
3. Synchronize search for database operations	DB Operation (UPDATE) Error	Medium	Automatic Qualifier Available
4. Synchronize search for ranges of simplified objects	Functionality incompatible change of existing functionality	High	Automatic Qualifier Available
5. Synchronize search for ranges of simplified objects	Functionality not available: Functional equivalent available	Low	No Qualifier Available

SAP Fiori: Launchpad

My Home | Home | Search | Profile

My Home | Sales Orders | Sales Commissions and Incentives

My Sales Overview | **My Inbox** (All Items: 13) | **My Timesheet** (10 Days Missing) | **Lunch Menu** (Waldorf)

Sales Order

- Manage Sales Orders** (46.9 k EUR)
- Track Sales Orders** (Waldorf)
- Sales Order Fulfillment** (Condition Contracts: 3.2 k EUR)
- Confirmed Sales Order Items** (In Percent: 88.8%)
- Predicted Delivery Delay** (Delayed: 11%, Early: 19%, On Time: 70%; 5 min. ago)
- Quotation Conversion Rate** (17.3 % Current Quarter)

Sales Commissions and Incentives

- Donna Moore** (Incentives Manager)
- Display Business Volume** (Condition Contracts: 1.8 M EUR, Year to Date)
- Display Settlement Calendars** (Condition Contracts)
- Extend Condition Contracts**
- Sales Contract Fulfillment** (EMEA: 1.8M 3M EUR, Year to Date)

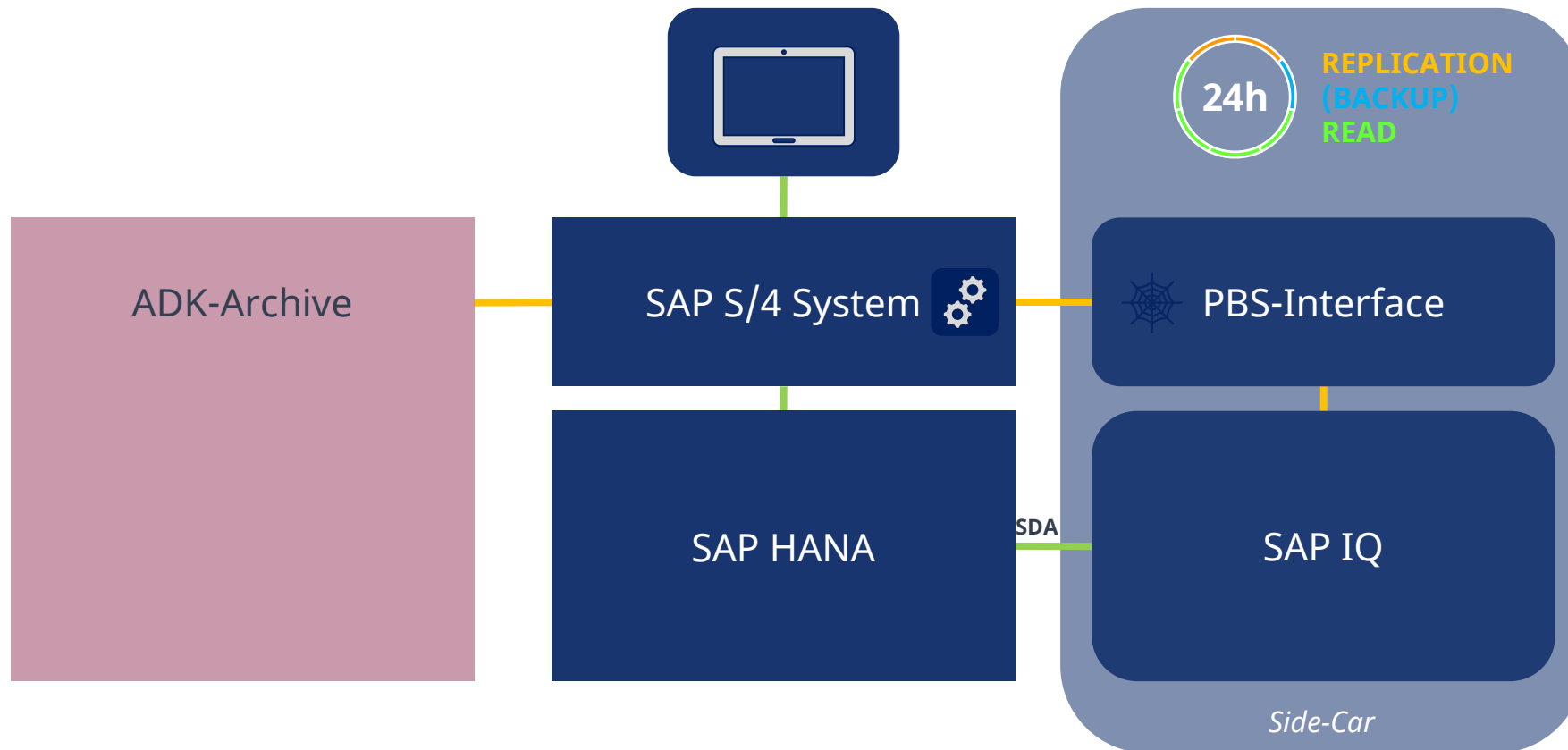
PBS mit SAP Fiori

Auf archivierte Daten mit SAP Fiori Elements Apps zugreifen

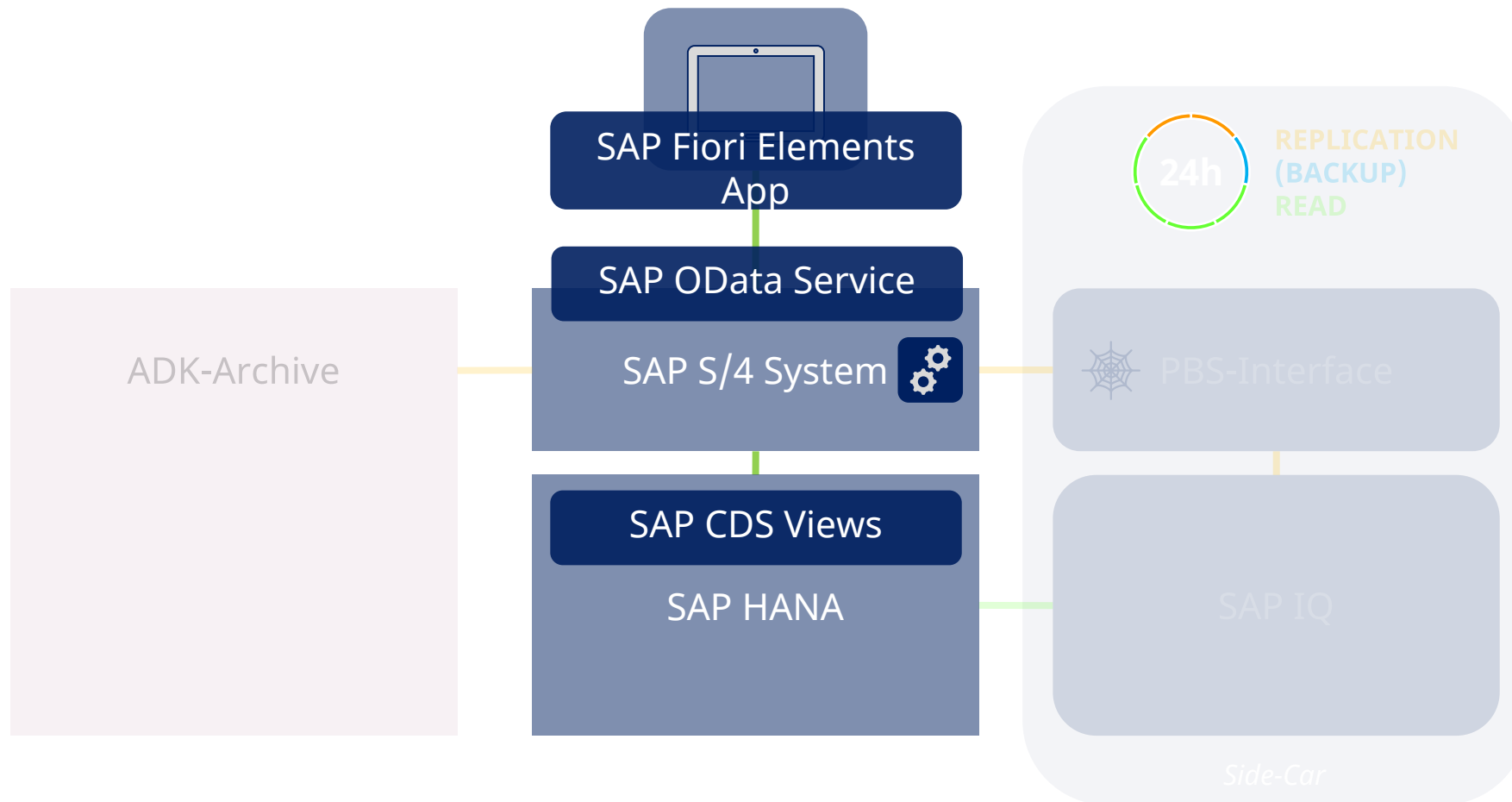
Anforderungen

- Integration von archivierten Daten in SAP Fiori Elements Apps
- Möglichst einfache Umsetzung
- Auslieferung unabhängig von On-Prem oder Cloud

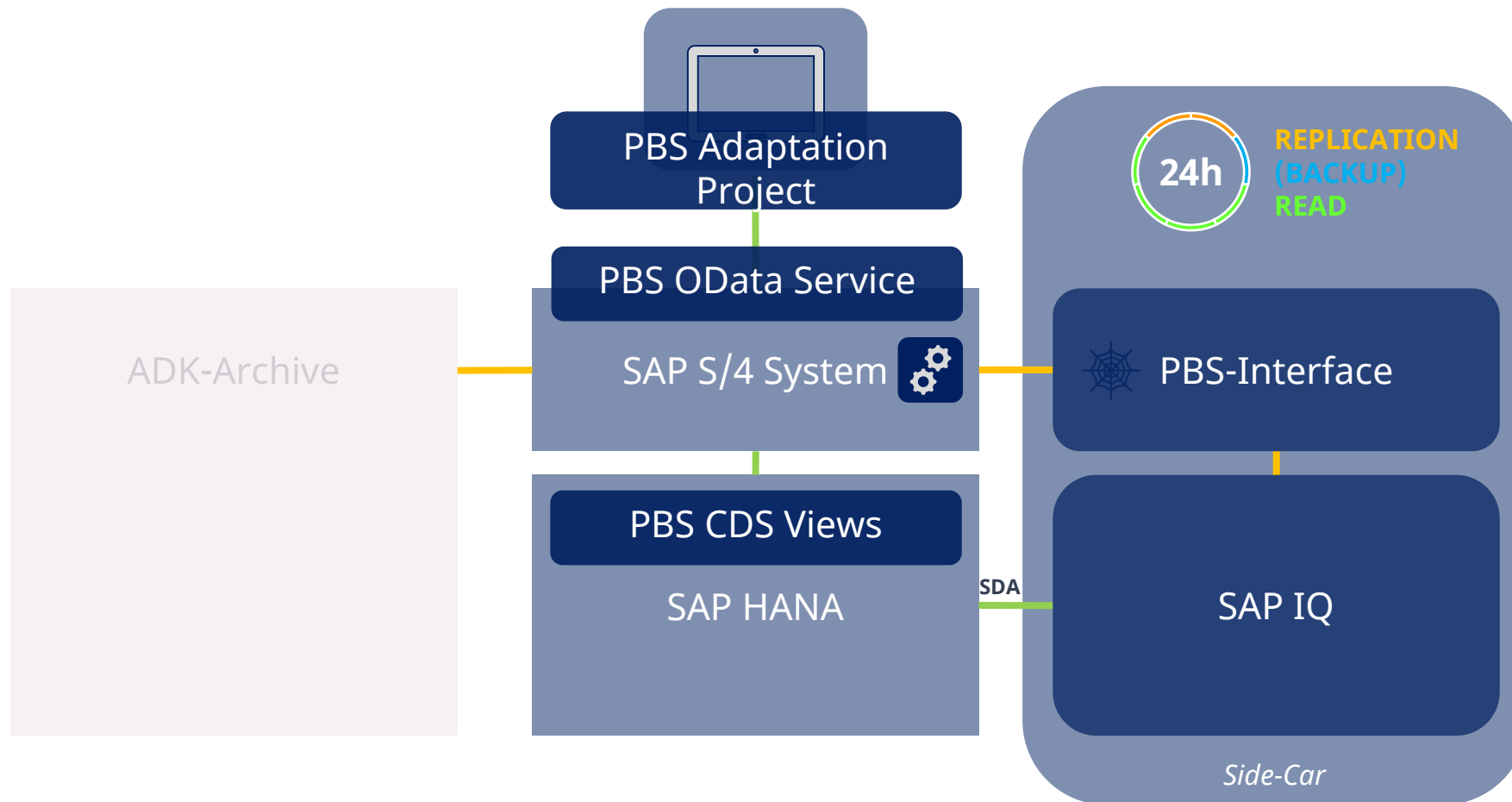
Business Case: Fiori-Apps mit Archivzugriff



Business Case: Fiori-Apps mit Archivzugriff



Business Case: Fiori-Apps mit Archivzugriff



Unterstützte Apps



SAP GUI Webapps



SAPUI5 Apps:

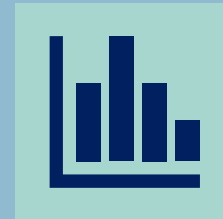
- PBS ContentReader
- PBS ContentLink
- PBS NAI Monitor



SAP Fiori Elements

Transaktionale Apps:

- List Report Page
- Objekt Page



SAP Fiori Elements Analytische Apps:

- Analytical List Report Page
- Overview Page

Projekttablauf

- Analyse der Kundenanforderung
- Auswahl der archivrelevanten Apps
- Replikation der Daten aus Archiv in NAI mit Data Replications Service (DRS)
- Automatische Konvertierung der SAP CDS Views
- Austausch des SAP OData Service pro App
- Einbinden der PBS App in SAP Fiori Launchpad

App Name	App Name deutsch	App ID	Technology	Transaction Type
General Ledger Overview	Hauptbuchübersicht	F2445	Fiori Elements	Overview Page
Display Line Items in General Ledger	Einzelposten im Hauptbuch anzeigen	F2217	SAPUI5	Transactional
Display Line Item Entry	Einzelpostenerfassung anzeigen	F2218	Fiori Elements	Transactional
Audit Journal	Prüfungsjournal	F0997	SAPUI5	Transactional
Manage Journal Entries	Buchungsbelege verwalten	F0717	SAPUI5	Transactional
Display Journal Entries - In T-Account View	Buchungsbelege anzeigen - In T-Konto-Sicht	F3664	SAPUI5	Transactional
Display Document Flow	Belegfluss anzeigen	F3665	SAPUI5	Analytical
Accounts Payable Overview	Übersicht der Kreditorenbuchhaltung	F2917	Fiori Elements	Overview Page
Display Supplier List	Kreditorenliste anzeigen	F1861	Fiori Elements	Transactional
Accounts Receivable Overview	Übersicht der Debitorenbuchhaltung	F3242	Fiori Elements	Overview Page
Display Customer Balances	Debitorensalden anzeigen	F0703	SAPUI5	Transactional
Display Customer List	Debitorenverzeichnis anzeigen	F2640	Fiori Elements	Transactional
Manage Customer Line Items	Debitorenposten bearbeiten	F0711	SAPUI5	Transactional
Manage Supplier Line Items	Kreditorenposten bearbeiten	F0712	SAPUI5	Transactional
Display Supplier Balances	Kreditorensalden anzeigen	F0701	SAPUI5	Transactional
Balance Sheet / Income Statement - Multidimensional	Bilanz/GuV	F0708	SAPUI5	Transactional
Manage G/L Account Master Data (Version 2)	Sachkontenstammdaten verwalten	F0731A	SAPUI5	Transactional
Manage Recurring Journal Entries	Dauerbuchungsbelege verwalten	F1598	SAPUI5	Transactional
Manage Sales Contracts	Verkaufskontrakte verwalten	F1851	Fiori Elements	Transactional
Manage Billing Documents	Fakturen verwalten	F0797	SAPUI5	Transactional
Manage Sales Orders	Kundenaufträge verwalten	F1873	Fiori Elements	Transactional
Manage Invoice Lists	Rechnungslisten verwalten	F2740	Fiori Elements	Transactional
Sales Management Overview	Übersicht für Vertriebsmanager	F2601	Fiori Elements	Overview Page
Manage Cost Centers (Version 2)	Kostenstellen verwalten	F1443A	Fiori Elements	Transactional
Manage Purchase Orders (Version 2)	Bestellungen verwalten	F0842A	SAPUI5	Transactional
Purchase Order (Version 2)	Bestellung	F0348A	Fiori Elements	Transactional
Material Documents Overview	Materialbelegübersicht	F1077	Fiori Elements	Analytical
Supplier Invoices List (Version 2)	Liste der Lieferantenrechnungen	F1060A	Fiori Elements	Transactional
Procurement Overview Page	Beschaffungsübersicht	F1990	Fiori Elements	Overview Page
Find Maintenance Order	Instandhaltungsauftrag suchen	F2175	Fiori Elements	Transactional
Manage Supplier Invoices		F0859	SAPUI5	Transactional
Monitor Purchase Requisition Items - By Account Assignment		F2422	Fiori Elements	Transactional
My Purchase Requisitions	Meine Bestellanforderungen	F1639	SAPUI5	Transactional
Product		F2773	Fiori Elements	Fact Sheet
My Purchasing Document Items	Meine Einkaufsbelegpositionen	F0547B	Fiori Elements	Transactional

PBS App Templates

Auslieferung App-Templates

- Auslieferung von App-Templates und DRS-Konfiguration per Transport
- Datenreplikation im Kundensystem durchführen
- Anpassung der App-Konfiguration im Kundensystem
- Aufwand ca. 1-2 Personentage pro App
- Ein CDS View kann von mehreren Apps verwendet werden!

Preisgestaltung

- SAP Fiori Elements Apps (Projektaufwand, NAI benötigt)
- PBS UI5 Apps (inklusive)
- PBS SAP GUI Transaktionen (inklusive)

Für weitere Informationen sprechen bitte Sie unseren Vertrieb an!

Zusammenfassung

- Integration von archivierten Daten in SAP Fiori Apps möglich
- Verfügbar für On-Prem oder Cloud (IaaS)
- Vorgefertigte App-Templates helfen bei der Reduzierung des Projektaufwands
- Einfache Umsetzung neuer Apps durch automatisierte Anpassung der CDS Views

Copyright

© Copyright 2022 PBS Software GmbH. All rights reserved.

No part of this presentation may be reproduced or transmitted in any form or for any purpose without the written permission of PBS Software GmbH. The information of this presentation might change without prior notice.

PBS archive add ons is a registered trademark of PBS Software GmbH.

SAP, SAP ERP, SAP HANA, S/4HANA, SAP ILM, SAP NetWeaver, SAP NetWeaver Business Warehouse and other SAP products and services mentioned herein as well as their respective logos are trademarks or registered trademarks of SAP SE in Germany and other countries.

All other product and service names mentioned are the trademarks of their respective companies.

Data contained in this document serves informational purposes only. PBS Software GmbH shall not be liable for errors or omissions with respect to the materials. The only warranties for products and services are those that are set forth in the express warranty statements accompanying such products and services, if any. Nothing herein should be construed as constituting an additional warranty.