



Future-oriented:

Apps as a complementary technology

Gernot Reichling
Nicolas Bopp
Expert for SAPUI5

Agenda

SAP Fiori

PBS with SAP Fiori

Demo

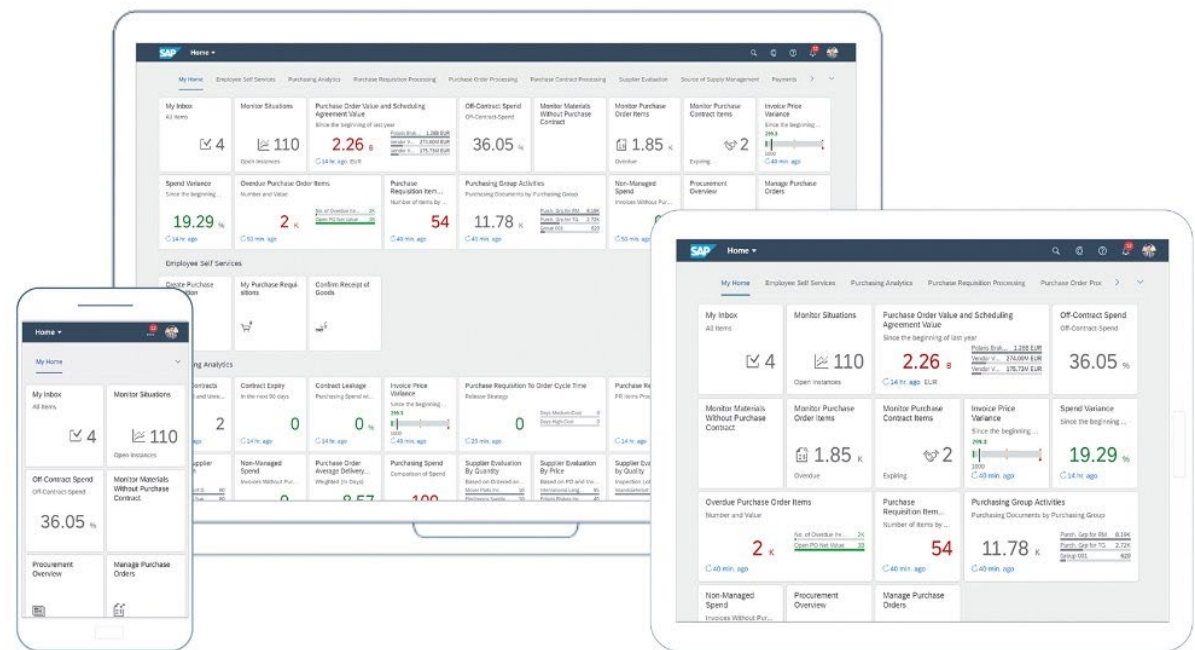
Project Workflow

Summary



SAP Fiori

An Overview



Source: <https://blogs.sap.com/2019/09/20/first-parts-of-sap-fiori-3-available-for-on-premise-customers-sap-s4hana-and-sap-business-suite/>

SAP Fiori: Development

SAP Fiori 1.0

- 2013
- Eclipse Studio

SAP Fiori 2.0

- 2016
- Web IDE
- Extension Projects

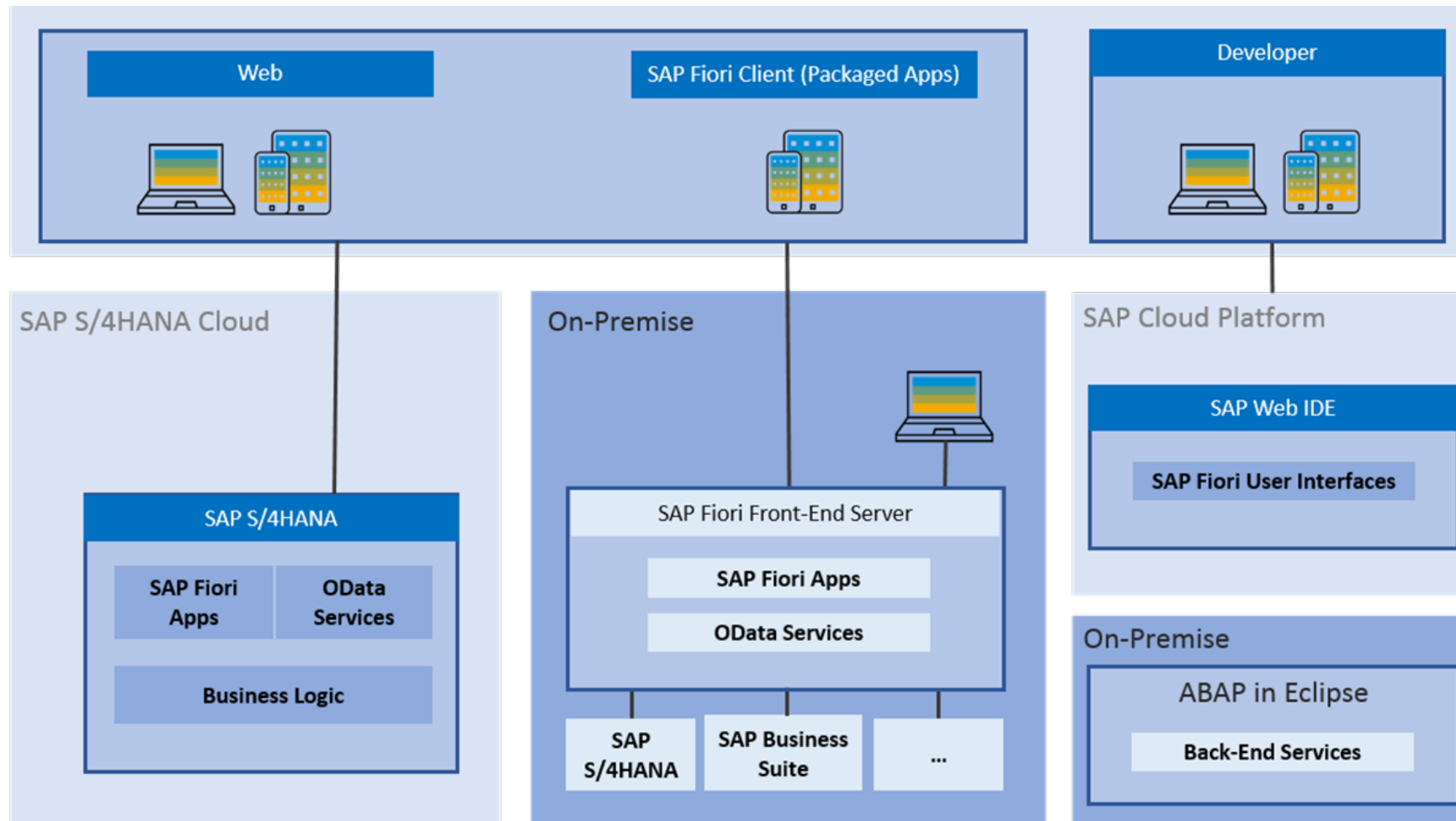
SAP Fiori 3.0

- 2019
- Business Application Studio
- Adaptation

SAP Fiori: Version Overview

Version	Maintenance Status	End of Maintenance	End of Cloud Provisioning	SAP_UI version*	Front-end Server*
1.102(2205)	Maintenance	Q1/2023	Q1/2024	7.57	SAP FIORI FES 2022 FOR S/4HANA
1.96 (2111)	Maintenance	Long-term Maintenance, Q4/2024	Q4/2025	7.56	SAP FIORI FES 2021 FOR S/4HANA (SAP Note 3050199)
1.84 (2011)	Maintenance	Long-term Maintenance, Q4/2023	Q4/2024	7.55	SAP FIORI FES 2020 FOR S/4HANA (SAP Note 2919182)
1.71 (1910)	Maintenance	Long-term Maintenance, Q4/2027	Q4/2028	7.54	SAP Fiori FES 6.0 (SAP Note 2775163)
1.38	Maintenance	Long-Term Maintenance, Q4/2027	Q4/2028	Only via UI add-on 2.0	n/a (see SAP note 2210123 and SAP note 2972680)
1.101 (2204)	Out of maintenance		Q2/2023	Cloud only	Cloud only
1.100 (2203)	Out of maintenance		Q2/2023	Cloud only	Cloud only
1.99 (2202)	Out of maintenance		Q2/2023	Cloud only	Cloud only
1.98 (2201)	Out of maintenance		Q1/2023	Cloud only	Cloud only
1.97 (2112)	Out of maintenance	Q1/2022	Q1/2023	Cloud only	Cloud only

SAP Fiori: Architecture



SAP Fiori: Apps

Apps (13607)

Search

Filtered by: Product Suite (SAP S/4HANA)

SAP Fiori lighthouse apps

- ☐ Capacity Scheduling Table / Schedule Production
- ☐ Cash Flow Analyzer
- ☐ Change Process Analysis for Business Partner
- ☐ Chemical Inventory Reporting
- ☐ Classify Products - Commodity Codes
- ☐ Commitments and Actuals Analyses
- ☐ Compliance Information for Products
- ☐ Count Physical Inventory
- ☐ Create Inbound Delivery
- ☐ Create Optimal Orders for Shipment
- ☐ Create Sales Orders - Automatic Extraction
- ☐ Custom Business Objects
- ☐ Custom CDS Views (Version 2)
- ☐ Custom Code Migration
- ☐ Custom Fields and Logic
- ☐ Cycle Counting - Classification
- ☐ Data Quality Evaluation Overview for Business Partners
- ☐ Data Quality Evaluation Overview for Products
- ☐ Debt and Investment Maturity Profile
- ☐ Display Chart of Accounts (Version 2) / Manage Chart of Accounts
- ☐ Display Document Flow

Welcome to the SAP Fiori Apps Reference Library!

Explore, plan and implement SAP Fiori, the latest user experience from SAP including all relevant content for the SAP Fiori launchpad.

Find out how to get the most out of SAP Fiori Apps Reference Library in the [help portal](#).

Find out how you can take advantage of SAP Fiori with our [SAP Fiori lighthouse scenarios](#) designed to deliver immediate business benefit to SAP S/4HANA customers.

You can learn more about SAP Fiori at our website or see SAP Fiori in action with a [free trial](#).

SAP Fiori Lighthouse Scenarios Updated

Read More about the SAP Fiori apps reference library.

Findings by Priority

Findings by Scope

Findings by Change Category

Findings by Scope Information

Findings by Change Information

Findings

Findings by Priority

Findings by Scope

Findings by Change Category

Findings by Scope Information

Findings by Change Information

Custom Code Migration

for Project Manager - IT

3 of 10

Detail View

List View

Legal

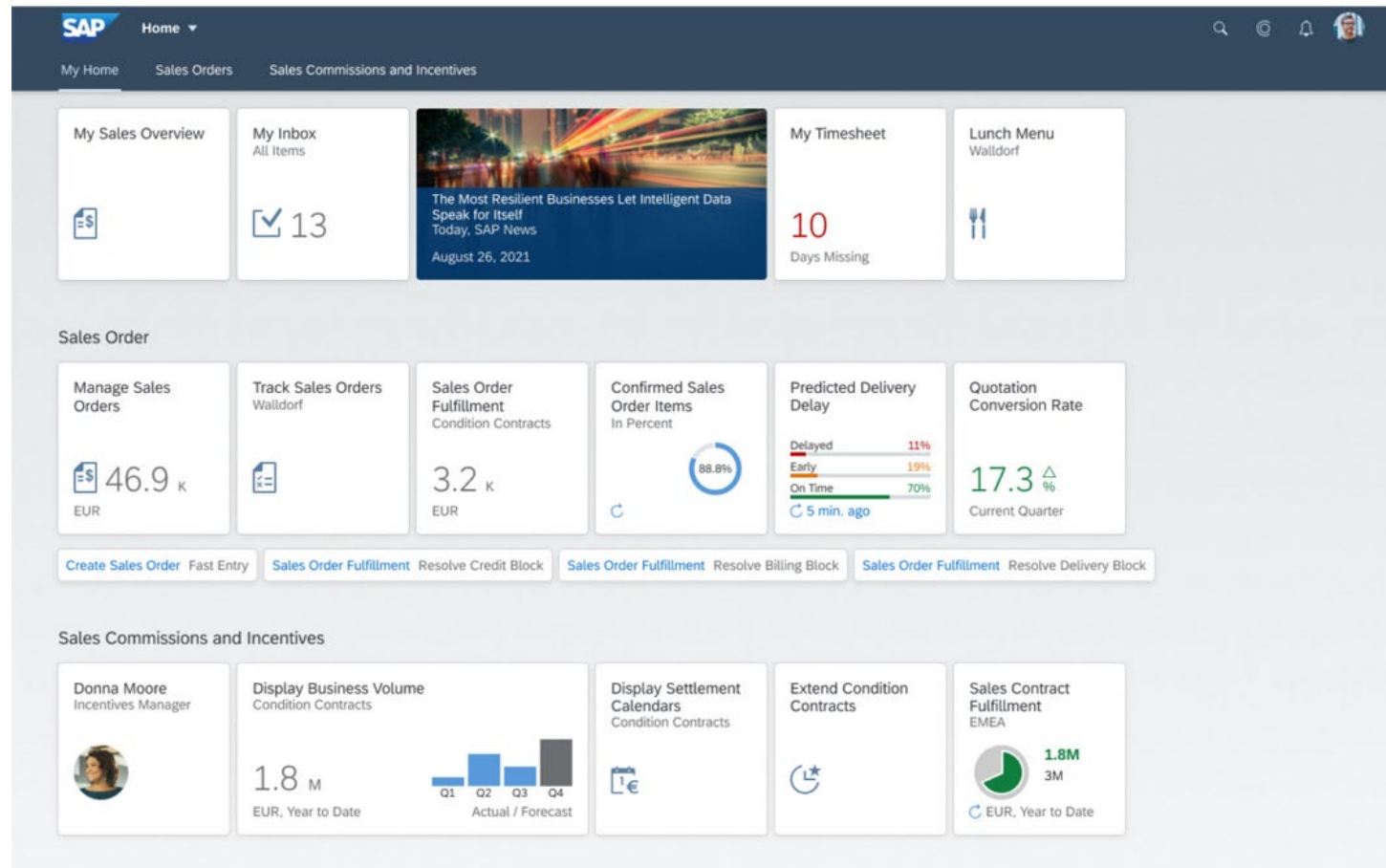
PBS software

<https://fioriappslibrary.hana.ondemand.com/sap/fix/externalViewer/#/home>

Page 7

Apps as a complementary technology, June 21, 2022

SAP Fiori: Launchpad



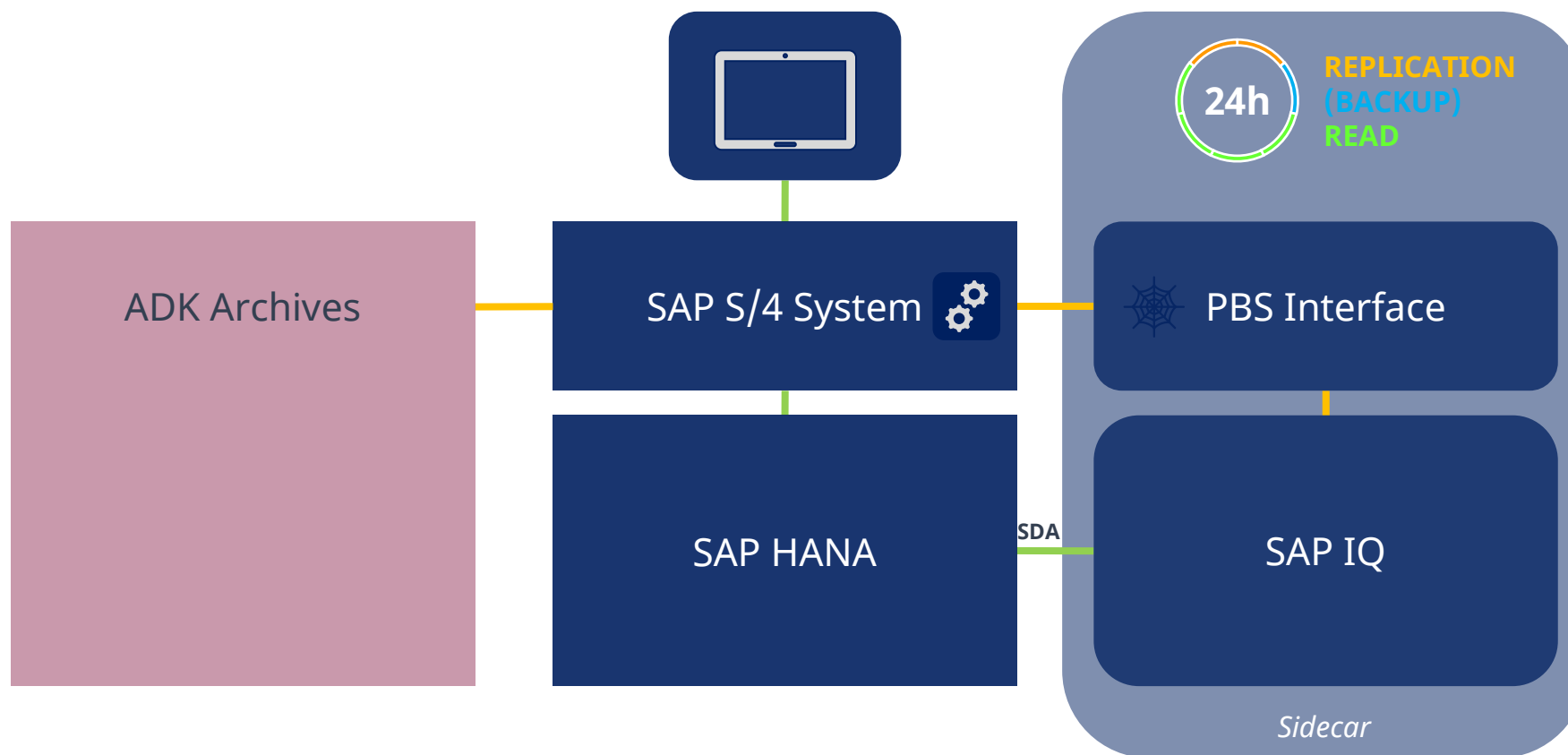
PBS with SAP Fiori

Access to archived Data with SAP Fiori Elements Apps

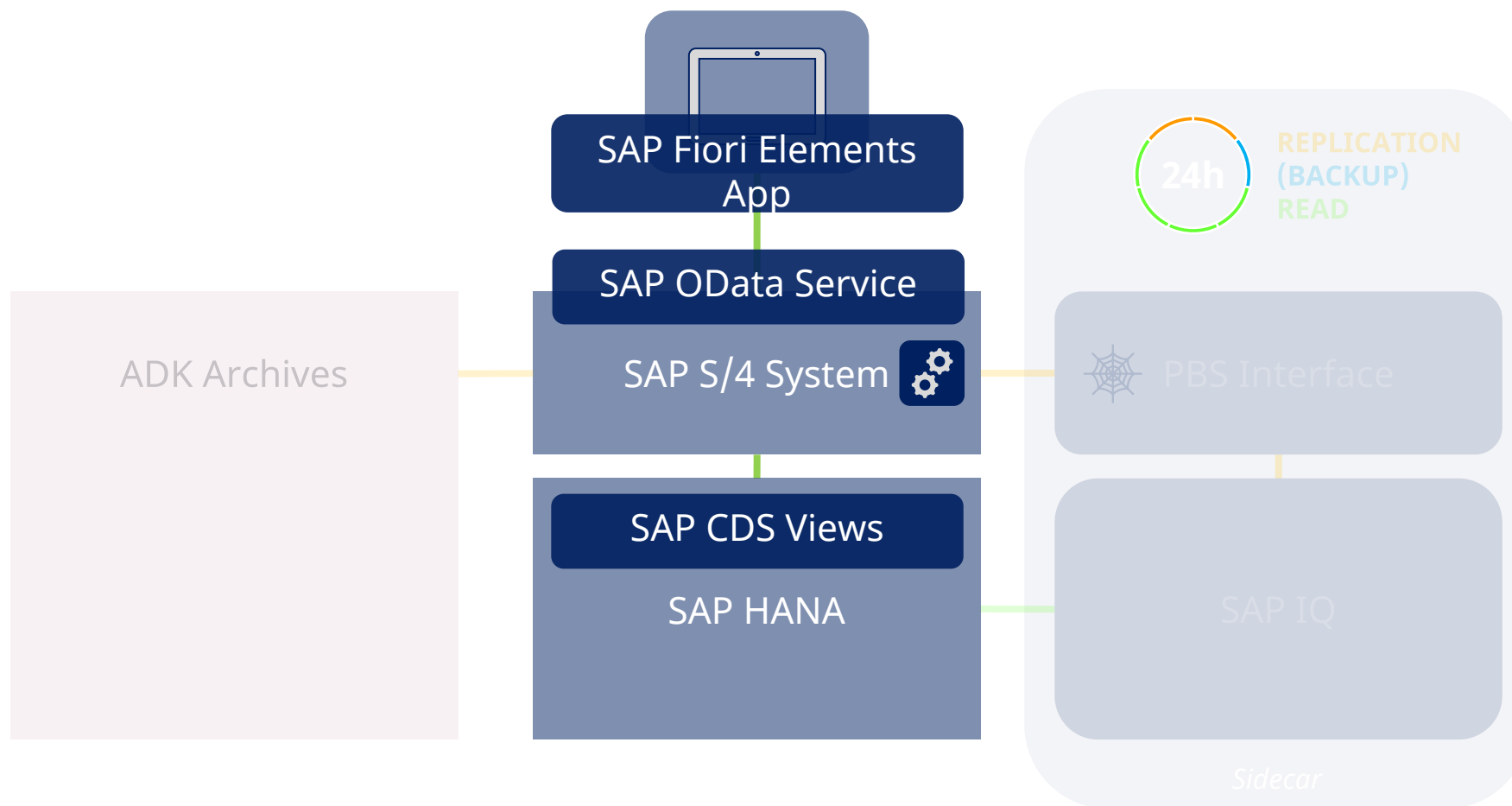
Requirements

- Integration of archived data in SAP Fiori Elements Apps
- Implementing as simple as possible
- Delivery independent of on-prem or Cloud

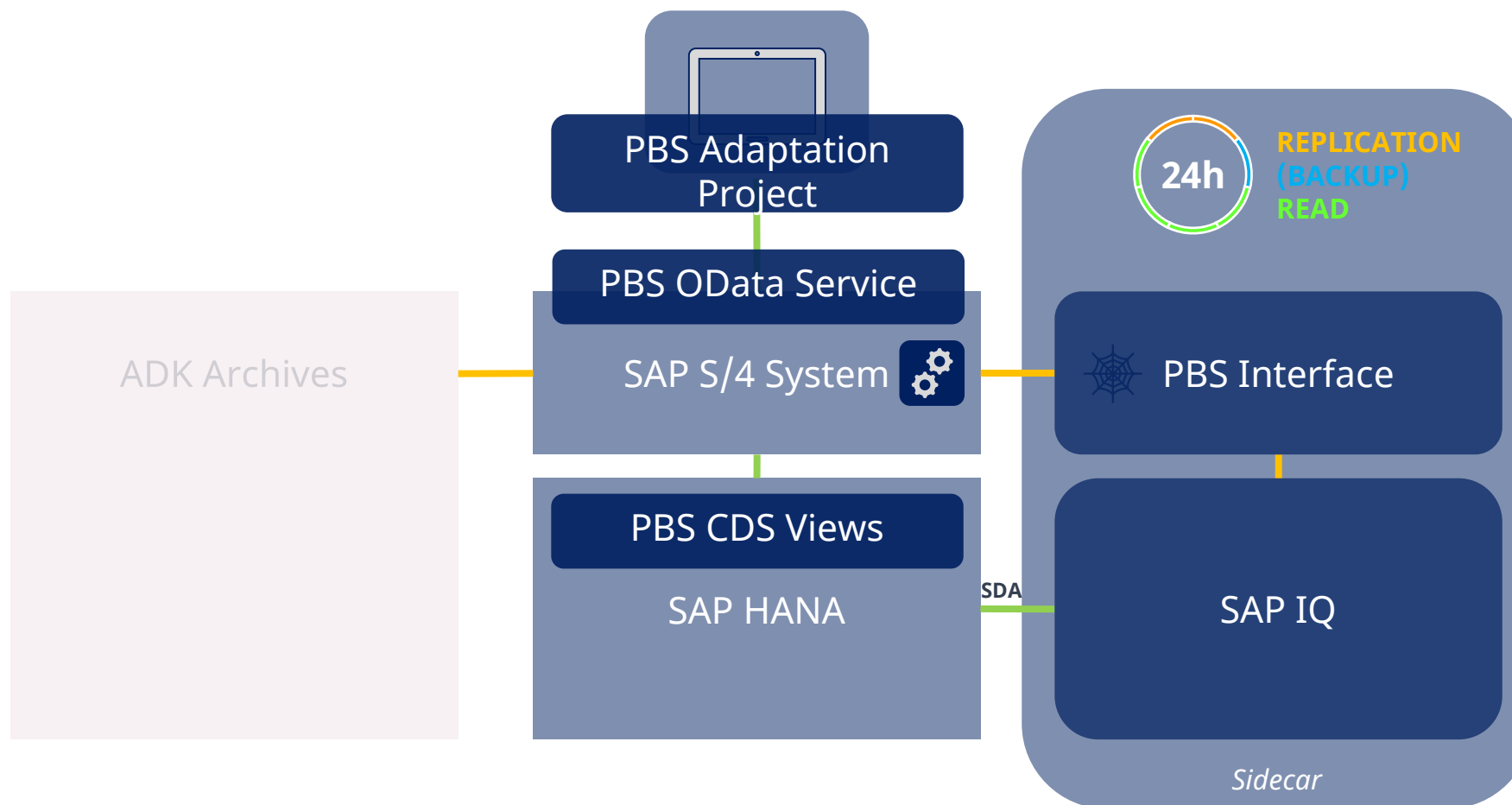
Business Case: Fiori Apps with Archive Access



Business Case: Fiori Apps with Archive Access



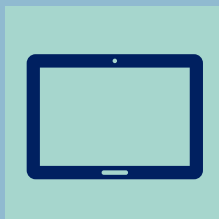
Business Case: Fiori Apps with Archive Access



Supported Apps



SAP GUI Web Apps



SAPUI5 Apps:

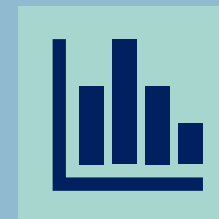
- PBS ContentReader
- PBS ContentLink
- PBS NAI Monitor



SAP Fiori Elements

Transactional Apps:

- List Report Page
- Object Page



SAP Fiori Elements Analytical Apps:

- Analytical List Report Page
- Overview Page

Project Workflow

- Analysis of customer requirements
- Selection of archive relevant apps
- Data replication from archive
in NAI with Data Replication Service (DRS)
- Automatic conversion of SAP CDS views
- Exchange of SAP OData Service per app
- Integrating PBS app in SAP Fiori
launchpad

App Name	App Name deutsch	App ID	Technology	Transaction Type
General Ledger Overview	Hauptbuchübersicht	F2445	Fiori Elements	Overview Page
Display Line Items in General Ledger	Einzelposten im Hauptbuch anzeigen	F2217	SAPUI5	Transactional
Display Line Item Entry	Einzelpostenerfassung anzeigen	F2218	Fiori Elements	Transactional
Audit Journal	Prüfungsjournal	F0997	SAPUI5	Transactional
Manage Journal Entries	Buchungsbelege verwalten	F0717	SAPUI5	Transactional
Display Journal Entries - In T-Account View	Buchungsbelege anzeigen - In T-Konto-Sicht	F3664	SAPUI5	Transactional
Display Document Flow	Belegfluss anzeigen	F3665	SAPUI5	Analytical
Accounts Payable Overview	Übersicht der Kreditorenbuchhaltung	F2917	Fiori Elements	Overview Page
Display Supplier List	Kreditorenliste anzeigen	F1861	Fiori Elements	Transactional
Accounts Receivable Overview	Übersicht der Debitorenbuchhaltung	F3242	Fiori Elements	Overview Page
Display Customer Balances	Debitorensalden anzeigen	F0703	SAPUI5	Transactional
Display Customer List	Debitorenverzeichnis anzeigen	F2640	Fiori Elements	Transactional
Manage Customer Line Items	Debitorenposten bearbeiten	F0711	SAPUI5	Transactional
Manage Supplier Line Items	Kreditorenposten bearbeiten	F0712	SAPUI5	Transactional
Display Supplier Balances	Kreditorensalden anzeigen	F0701	SAPUI5	Transactional
Balance Sheet / Income Statement - Multidimensional	Bilanz/GuV	F0708	SAPUI5	Transactional
Manage G/L Account Master Data (Version 2)	Sachkontenstammdaten verwalten	F0731A	SAPUI5	Transactional
Manage Recurring Journal Entries	Dauerbuchungsbelege verwalten	F1598	SAPUI5	Transactional
Manage Sales Contracts	Verkaufskontrakte verwalten	F1851	Fiori Elements	Transactional
Manage Billing Documents	Fakturen verwalten	F0797	SAPUI5	Transactional
Manage Sales Orders	Kundenaufträge verwalten	F1873	Fiori Elements	Transactional
Manage Invoice Lists	Rechnungslisten verwalten	F2740	Fiori Elements	Transactional
Sales Management Overview	Übersicht für Vertriebsmanager	F2601	Fiori Elements	Overview Page
Manage Cost Centers (Version 2)	Kostenstellen verwalten	F1443A	Fiori Elements	Transactional
Manage Purchase Orders (Version 2)	Bestellungen verwalten	F0842A	SAPUI5	Transactional
Purchase Order (Version 2)	Bestellung	F0348A	Fiori Elements	Transactional
Material Documents Overview	Materialbelegübersicht	F1077	Fiori Elements	Analytical
Supplier Invoices List (Version 2)	Liste der Lieferantenrechnungen	F1060A	Fiori Elements	Transactional
Procurement Overview Page	Beschaffungsübersicht	F1990	Fiori Elements	Overview Page
Find Maintenance Order	Instandhaltungsauftrag suchen	F2175	Fiori Elements	Transactional
Manage Supplier Invoices		F0859	SAPUI5	Transactional
Monitor Purchase Requisition Items - By Account Assignment		F2422	Fiori Elements	Transactional
My Purchase Requisitions	Meine Bestellanforderungen	F1639	SAPUI5	Transactional
Product		F2773	Fiori Elements	Fact Sheet
My Purchasing Document Items	Meine Einkaufsbelegpositionen	F0547B	Fiori Elements	Transactional

PBS App Templates

App Template Delivery

- Delivery of app templates and DRS configuration per transport
- Carry out data replication in customer system
- Adapt app configuration in customer system
- Effort: about 1-2 person-days per app
- A CDS view can be used by different apps!

Pricing

- SAP Fiori Elements Apps (project effort, NAI required)
- PBS UI5 Apps (including)
- PBS SAP GUI transactions (including)

For further information, please contact our sales team!

Summary

- Integration of archived data possible in SAP Fiori Apps
- Available for on-prem or Cloud (IaaS)
- Predefined app templates support in reducing the project effort
- Easy implementation of new apps by an automated adaptation of CDS views

Copyright

© Copyright 2022 PBS Software GmbH. All rights reserved.

No part of this presentation may be reproduced or transmitted in any form or for any purpose without the written permission of PBS Software GmbH. The information of this presentation might change without prior notice.

PBS archive add ons is a registered trademark of PBS Software GmbH.

SAP, SAP ERP, SAP HANA, S/4HANA, SAP ILM, SAP NetWeaver, SAP NetWeaver Business Warehouse and other SAP products and services mentioned herein as well as their respective logos are trademarks or registered trademarks of SAP SE in Germany and other countries.

All other product and service names mentioned are the trademarks of their respective companies.

Data contained in this document serves informational purposes only. PBS Software GmbH shall not be liable for errors or omissions with respect to the materials. The only warranties for products and services are those that are set forth in the express warranty statements accompanying such products and services, if any. Nothing herein should be construed as constituting an additional warranty.